

Anti-BCL2L10

Rabbit Polyclonal Antibody

Catalog # B26-363JR

Lot # O2361-15

Cited Applications

E, WB, ICC

Ideal working dilutions for each application should be empirically determined by the investigator.

Specificity

Recognizes the BCL2L10 protein

Cross Reactivity

Human

Host/Isotype/Clone#

Rabbit, IgG

Immunogen

BCL2L10 antibody was raised against a 16 amino acid synthetic peptide from near the amino terminus of human BCL2L10

Formulation

PBS + 0.02% sodium azide.

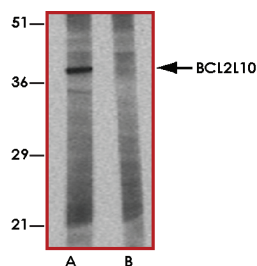
Stability

1yr at -20°C from date of shipment.

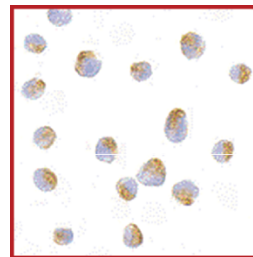
References

1. Cory S et al: The Bcl-2 family: roles in cell survival and oncogenesis. *Oncogene* 2003; 22:8590-607
2. Heiser D et al: The Bcl-2 protein family and its role in the development of neoplastic disease. *Exp. Gerontol.* 2004; 39:1125-35.
3. Ke N et al: Bcl-B: A novel Bcl-2 family member that differentially binds and regulates Bax and Bak. *J. Biol. Chem.* 2001; 276:12481-4.
4. Song Q et al: Boo, a negative regulator of cell death, interacts with Apaf-1. *EMBO J.* 1999; 18:167-78.

Sample Data



Western blot analysis of BCL2L10 in Jurkat lysate with BCL2L10 antibody at 1 µg/ml in the (A) absence and (B) presence of blocking peptide.



Immunocytochemistry of BCL2L10 in Jurkat cells with BCL2L10 antibody at 10 µg/mL.

Anti-BCL2L10

Rabbit Polyclonal Antibody

Catalog Number

B26-363JR

Specific Lot Number

O2361-15

Purification

Affinity chromatography

Stability

1yr at -20°C from date of shipment

Storage & Shipping

Store product at -20°C. For optimal storage, aliquot antibody into smaller quantities after centrifugation and store at recommended temperature. For optimal performance, avoid repeated handling and multiple freeze/thaw cycles. Product shipped on ice packs.

To place your order, please contact us by phone 1-(604)-232-4600, fax 1-604-232-4601 or by email: orders@signalchem.com
www.signalchem.com

FOR IN VITRO RESEARCH PURPOSES ONLY. NOT INTENDED FOR USE IN HUMAN OR ANIMALS.