

## Anti-BCL2L1

Rabbit Polyclonal Antibody

**Catalog # B26-363R**

Lot # O2361-14

### Cited Applications

E, WB

*Ideal working dilutions for each application should be empirically determined by the investigator.*

### Specificity

Recognizes the BCL2L1 protein

### Cross Reactivity

Human

### Host/Isotype/Clone#

Rabbit, IgG

### Immunogen

BCL2L1 antibody was raised against a peptide corresponding to 14 amino acids near the carboxy terminus of human BCL2L1

### Formulation

PBS + 0.02% sodium azide.

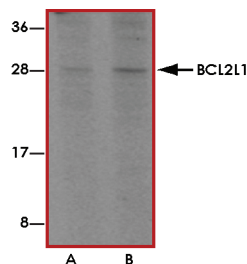
### Stability

1yr at -20°C from date of shipment.

### References

1. Lockshin RA et al: Cell death in the third millennium. Cell Death Differ. 2000; 7:2-7.
2. Cory S et al: The Bcl-2 family: roles in cell survival and oncogenesis. Oncogene 2003; 22:8590-607.
3. Heiser D et al: The Bcl-2 protein family and its role in the development of neoplastic disease. Exp. Gerontol. 2004; 39:1125-35.
4. Gonzalez-Garcia M et al: bcl-xL is the major bcl-x mRNA form expressed during murine development and its product localizes to mitochondria. Development 1994; 120:3033-42.

### Sample Data



Western blot analysis of BCL2L1 in A549 cell lysates with Bcl-xL antibody at (A) 1 and (B) 2 µg/mL.

## Anti-BCL2L1

Rabbit Polyclonal Antibody

Catalog Number

**B26-363R**

Specific Lot Number

**O2361-14**

Purification

Affinity chromatography

Stability

1yr at -20°C from date of shipment

Storage & Shipping

Store product at -20°C. For optimal storage, aliquot antibody into smaller quantities after centrifugation and store at recommended temperature. For optimal performance, avoid repeated handling and multiple freeze/thaw cycles. Product shipped on ice packs.

To place your order, please contact us by phone 1-(604)-232-4600, fax 1-604-232-4601 or by email: [orders@signalchem.com](mailto:orders@signalchem.com)  
[www.signalchem.com](http://www.signalchem.com)

**FOR IN VITRO RESEARCH PURPOSES ONLY. NOT INTENDED FOR USE IN HUMAN OR ANIMALS.**