

Anti-BAK1

Rabbit Polyclonal Antibody

Catalog # B09-363R

Lot # O2361-13

Cited Applications

E, WB, ICC

Ideal working dilutions for each application should be empirically determined by the investigator.

Specificity

Recognizes the BAK1 protein

Cross Reactivity

Human and Mouse

Host/Isotype/Clone#

Rabbit, IgG

Immunogen

BAK1 antibody was raised against a peptide corresponding to 13 amino acids near the amino-terminus of human BAK1

Formulation

PBS + 0.02% sodium azide.

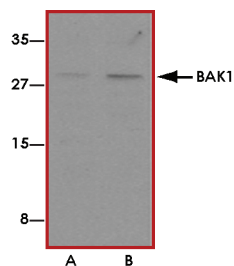
Stability

1yr at -20°C from date of shipment.

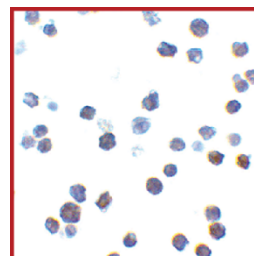
References

1. Lockshin RA et al: Cell death in the third millennium. Cell Death Differ. 2000; 7:2-7.
2. Cory S et al: The Bcl-2 family: roles in cell survival and oncogenesis. Oncogene 2003; 22:8590-607.
3. Heiser D et al: The Bcl-2 protein family and its role in the development of neoplastic disease. Exp. Gerontol. 2004; 39:1125-35.
4. Kiefer M et al: Modulation of apoptosis by the widely distributed Bcl-2 homologue Bak. Nature 1995; 374:736-9.

Sample Data



Western blot analysis of BAK1 in L1210 cell lysates with BAK1 antibody at (A) 1 and (B) 2 µg/mL.



Immunocytochemistry of BAK1 in L1210 cells with BAK1 antibody at 2 µg/mL.

Anti-BAK1

Rabbit Polyclonal Antibody

Catalog Number

B09-363R

Specific Lot Number

O2361-13

Purification

Affinity chromatography

Stability

1yr at -20°C from date of shipment

Storage & Shipping

Store product at -20°C. For optimal storage, aliquot antibody into smaller quantities after centrifugation and store at recommended temperature. For optimal performance, avoid repeated handling and multiple freeze/thaw cycles. Product shipped on ice packs.

To place your order, please contact us by phone 1-(604)-232-4600, fax 1-604-232-4601 or by email: orders@signalchem.com
www.signalchem.com

FOR IN VITRO RESEARCH PURPOSES ONLY. NOT INTENDED FOR USE IN HUMAN OR ANIMALS.