

Anti-APC8

Rabbit Polyclonal Antibody

Catalog # A94-363R

Lot # O2361-11

Cited Applications

E, WB, ICC

Ideal working dilutions for each application should be empirically determined by the investigator.

Specificity

Recognizes the APC8 protein

Cross Reactivity

Human, Mouse and Rat

Host/Isotype/Clone#

Rabbit, IgG

Immunogen

APC8 antibody was raised against a 17 amino acid synthetic peptide near the center of human APC8

Formulation

PBS + 0.02% sodium azide.

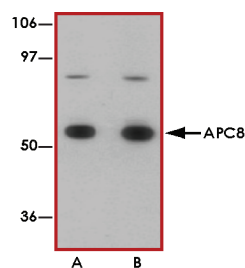
Stability

1yr at -20°C from date of shipment.

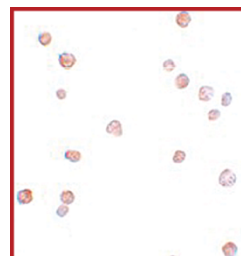
References

1. Peters JM: The anaphase promoting complex/cyclosome: a machine designed to destroy. *Nat. Rev. Mol. Cell Biol.*2006; 7:644-56.
2. Jorgensen PM et al: Characterisation of the human APC1, the largest subunit of the anaphase-promoting complex. *Gene*2001; 262:51-9.
3. Pal M et al: Structurally related TPR subunits contribute differently to the function of the anaphase-promoting complex in *Drosophila melanogaster*. *J. Cell Sci.*2007; 120:3238-48.

Sample Data



Western blot analysis of APC8 in K562 cell lysate with APC8 antibody at (A) 1 and (B) 2 ug/mL.



Immunocytochemistry of APC8 in K562 cells with APC8 antibody at 5 ug/mL.

Anti-APC8

Rabbit Polyclonal Antibody

Catalog Number

A94-363R

Specific Lot Number

O2361-11

Purification

Affinity chromatography

Stability

1yr at -20°C from date of shipment

Storage & Shipping

Store product at -20°C. For optimal storage, aliquot antibody into smaller quantities after centrifugation and store at recommended temperature. For optimal performance, avoid repeated handling and multiple freeze/thaw cycles. Product shipped on ice packs.

To place your order, please contact us by phone 1-(604)-232-4600, fax 1-604-232-4601 or by email: orders@signalchem.com
www.signalchem.com

FOR IN VITRO RESEARCH PURPOSES ONLY. NOT INTENDED FOR USE IN HUMAN OR ANIMALS.