

## Anti-phospho-Tau (Ser235)

Rabbit Polyclonal Antibody

**Catalog # T08-365FR**

Lot # O2206-4

### Cited Applications

WB

WB: 1:500~1:1000

Ideal working dilutions for each application should be empirically determined by the investigator.

### Specificity

Recognizes endogenous levels of Tau only when phosphorylated at serine 235

### Cross Reactivity

Human, Mouse and Rat

### Host/Isotype/Clone#

Rabbit, IgG

### Immunogen

The antiserum was produced against synthesized phosphopeptide derived from human Tau around the phosphorylation site of serine 235 (P-K-SP-P-S)

### Formulation

PBS + 0.02% sodium azide

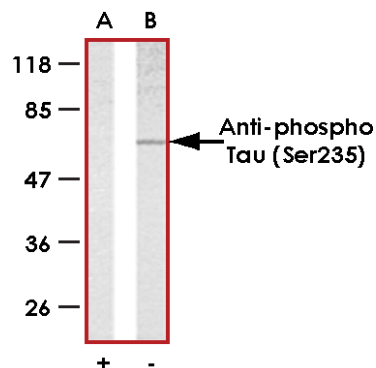
### Stability

1yr at -20°C from date of shipment

### References

1. Alonso Adel C, et al: Promotion of hyperphosphorylation by frontotemporal dementia tau mutations. J Biol Chem. 2004 Aug 13;279(33):34873-81.
2. Liu F, et al: Involvement of aberrant glycosylation in phosphorylation of tau by cdk5 and GSK-3beta. FEBS Lett. 2002 Oct 23;530(1-3):209-14.
3. Sengupta A, et al: Phosphorylation of tau at both Thr 231 and Ser 262 is required for maximal inhibition of its binding to microtubules. Arch Biochem Biophys. 1998 Sep 15;357(2):299-309.
4. Kyriakis JM, et al: The stress-activated protein kinase subfamily of c-Jun kinases. Nature. 1994 May 12;369(6476):156-60.

### Sample Data



Western blot analysis of extract from mouse brain tissue using Anti-phospho-Tau (Ser235) antibody

## Anti-phospho-Tau (Ser235)

Rabbit Polyclonal Antibody

Catalog Number

T08-365FR

Specific Lot Number

O2206-4

Purification Affinity chromatography

Stability 1yr at -20°C from date of shipment

Storage & Shipping Store product at -20°C. For optimal storage, aliquot antibody into smaller quantities after centrifugation and store at recommended temperature. For optimal performance, avoid repeated handling and multiple freeze/thaw cycles. Product shipped on ice packs.

To place your order, please contact us by phone 1-(604)-232-4600, fax 1-604-232-4601 or by email: [orders@signalchem.com](mailto:orders@signalchem.com)  
[www.signalchem.com](http://www.signalchem.com)

**FOR IN VITRO RESEARCH PURPOSES ONLY. NOT INTENDED FOR USE IN HUMAN OR ANIMALS.**