

Anti-phospho-Tau (Ser396)

Rabbit Polyclonal Antibody

Catalog # T08-365ER

Lot # O2206-3

Cited Applications

WB

Suggested Dilutions:

WB: 1:500~1:1000

Ideal working dilutions for each application should be empirically determined by the investigator.

Specificity

Recognizes endogenous levels of Tau only when phosphorylated at serine 396

Cross Reactivity

Human, Mouse and Rat

Host/Isotype/Clone#

Rabbit, IgG

Immunogen

The antiserum was produced against synthesized phosphopeptide derived from human Tau around the phosphorylation site of serine 396 (Y-K-SP-P-V)

Formulation

PBS + 0.02% sodium azide

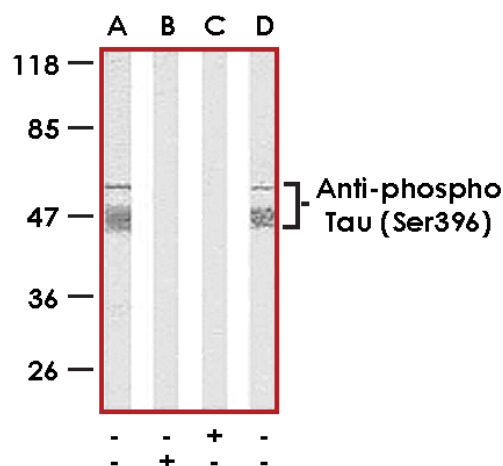
Stability

1yr at -20°C from date of shipment

References

1. Puig B, et al: Individual and regional variations of phospho-tau species in progressive supranuclear palsy. Acta Neuropathol. 2005 Sep;110(3):261-8.
2. DeGiorgis JA, et al: Phosphoproteomic analysis of synaptosomes from human cerebral cortex. J Proteome Res. 2005 Mar-Apr;4(2):306-15.
3. Alonso Adel C, et al: Promotion of hyperphosphorylation by frontotemporal dementia tau mutations. J Biol Chem. 2004 Aug 13;279(33):34873-81.
4. Kyriakis JM, et al: The stress-activated protein kinase subfamily of c-Jun kinases. Nature. 1994 May 12;369(6476):156-60.

Sample Data



Western blot analysis of extract from mouse brain tissue using a pan-Tau antibody (Lanes A and B) and Anti-phospho-Tau (Ser396) antibody (Lanes C and D)

Anti-phospho-Tau (Ser396)

Rabbit Polyclonal Antibody

Catalog Number

T08-365ER

Specific Lot Number

O2206-3

Purification

Affinity chromatography

Stability

1yr at -20°C from date of shipment

Storage & Shipping

Store product at -20°C. For optimal storage, aliquot antibody into smaller quantities after centrifugation and store at recommended temperature. For optimal performance, avoid repeated handling and multiple freeze/thaw cycles. Product shipped on ice packs.

To place your order, please contact us by phone 1-(604)-232-4600, fax 1-604-232-4601 or by email: orders@signalchem.com
www.signalchem.com

FOR IN VITRO RESEARCH PURPOSES ONLY. NOT INTENDED FOR USE IN HUMAN OR ANIMALS.