

Anti-PHLPP2

Rabbit Polyclonal Antibody

Catalog # P72-263R

Lot # O2121-49

Cited Applications

WB, ELISA

Ideal working dilutions for each application should be empirically determined by the investigator.

Specificity

Recognizes the PHLPP2 protein

Cross Reactivity

Human

Host/Isotype/Clone#

Rabbit, IgG

Immunogen

PHLPP2 antibody was raised against a 20 amino acid synthetic peptide near the carboxy terminus of human PHLPP2

Formulation

PBS + 0.02% sodium azide

Stability

1yr at -20°C from date of shipment

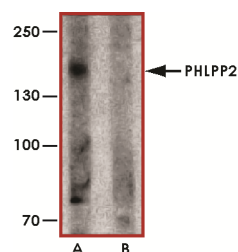
Scientific Background

PHLPP2 or PH domain and leucine rich repeat protein phosphatase 2 is the important regulators of Akt serine-threonine kinases and conventional/novel protein kinase C (PKC) isoforms. PHLPP1 and PHLPP2 differentially regulated AKT signaling by selectively dephosphorylating the hydrophobic motifs of AKT2 or AKT3. PHLPP may act as a tumor suppressor in several types of cancer due to its ability to block growth factor-induced signaling in cancer cells.

References

1. Brognard, J. et.al: PHLPP and a second isoform, PHLPP2, differentially attenuate the amplitude of Akt signaling by regulating distinct Akt isoforms. *Molec. Cell* 25: 917-931, 2007.

Sample Data



Western blot analysis of PHLPP2 in SW480 cell lysate with PHLPP2 antibody at 1 µg/ml in (A) the presence and (B) the absence of blocking peptide.

Anti-PHLPP2

Rabbit Polyclonal Antibody

Catalog Number

P72-263R

Specific Lot Number

O2121-49

Purification

Affinity chromatography

Stability

1yr at -20°C from date of shipment

Storage & Shipping

Store product at -20°C. For optimal storage, aliquot antibody into smaller quantities after centrifugation and store at recommended temperature. For optimal performance, avoid repeated handling and multiple freeze/thaw cycles. Product shipped on ice packs.

To place your order, please contact us by phone 1-(604)-232-4600, fax 1-604-232-4601 or by email: orders@signalchem.com
www.signalchem.com

FOR IN VITRO RESEARCH PURPOSES ONLY. NOT INTENDED FOR USE IN HUMAN OR ANIMALS.