

Anti-DYRK2

Rabbit Polyclonal Antibody

Catalog # D10-63R

Lot # O2121-40

Cited Applications

WB, ELISA, ICC, IF

Ideal working dilutions for each application should be empirically determined by the investigator.

Specificity

Recognizes the DYRK2 protein

Cross Reactivity

Human

Host/Isotype/Clone#

Rabbit, IgG

Immunogen

DYRK2 antibody was raised against an 18 amino acid synthetic peptide near the carboxy terminus of human DYRK2

Formulation

PBS + 0.02% sodium azide

Stability

1yr at -20°C from date of shipment

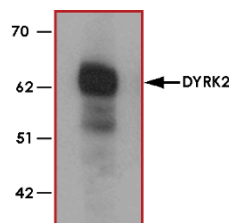
Scientific Background

DYRK2 (also known as dual-specificity tyrosine-(Y)-phosphorylation regulated kinase 2) belongs to a family of protein kinases whose members are presumed to be involved in cellular growth and/or development and is defined by structural similarity of their kinase domains and their capability to autophosphorylate on tyrosine residues. DYRK2 expressed in *E. coli* demonstrated tyrosine autophosphorylation and catalyzed phosphorylation of histones H3 and H2B in vitro (1). DYRK2 also regulates p53 to induce apoptosis in response to DNA damage (2).

References

1. Becker, W. et.al: Sequence characteristics, subcellular localization, and substrate specificity of DYRK-related kinases, a novel family of dual specificity protein kinases. *J. Biol. Chem.* 273: 25893-25902, 1998.
2. Taira, N. et.al: DYRK2 is targeted to the nucleus and controls p53 via Ser46 phosphorylation in the apoptotic response to DNA damage. *Molec. Cell* 25: 725-738, 2007.

Sample Data



Western blot analysis of DYRK2 in 293 cell lysate with DYRK2 antibody at (A) 1 and (B) 2 µg/ml.



Immunocytochemistry of DYRK2 in 293 cells with DYRK2 antibody at 10 µg/ml.

Anti-DYRK2

Rabbit Polyclonal Antibody

Catalog Number

D10-63R

Specific Lot Number

O2121-40

Purification

Affinity chromatography

Stability

1yr at -20°C from date of shipment

Storage & Shipping

Store product at -20°C. For optimal storage, aliquot antibody into smaller quantities after centrifugation and store at recommended temperature. For optimal performance, avoid repeated handling and multiple freeze/thaw cycles. Product shipped on ice packs.

To place your order, please contact us by phone 1-(604)-232-4600, fax 1-604-232-4601 or by email: orders@signalchem.com
www.signalchem.com

FOR IN VITRO RESEARCH PURPOSES ONLY. NOT INTENDED FOR USE IN HUMAN OR ANIMALS.