

Anti-SIRT5

Rabbit Polyclonal Antibody

Catalog # S39-463R

Lot # O2121-36

Cited Applications

WB, ELISA

Ideal working dilutions for each application should be empirically determined by the investigator.

Specificity

Recognizes the SIRT5 protein

Cross Reactivity

Human, Mouse and Rat

Host/Isotype/Clone#

Rabbit, IgG

Immunogen

SIRT5 antibody was raised against a 17 amino acid synthetic peptide near the carboxy terminus of human SIRT5

Formulation

PBS + 0.02% sodium azide

Stability

1yr at -20°C from date of shipment

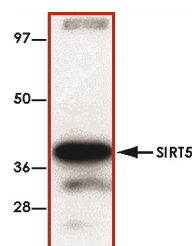
Scientific Background

SIRT5 is a member of the sirtuin family of proteins which are homologs to the yeast Sir2 protein. Sirtuin family contain a sirtuin core domain and are grouped into four classes with SIRT5 being a member of class III. SIRT5 consists of eight exons and is found in two isoforms which encode a 310 aa and a 299 aa protein, respectively. Human SIRT5 is most predominantly expressed in heart muscle cells and in lymphoblasts. Fluorescence in situ hybridization analysis localized the human SIRT5 gene to chromosome 6p23. SIRT5 can deacetylate cytochrome c, a protein of the mitochondrial intermembrane space with a central function in oxidative metabolism as well as apoptosis initiation (1).

References

- Schlicker C. et al: Substrates and regulation mechanisms for the human mitochondrial sirtuins Sirt3 and Sirt5. J Mol Biol. 2008 Oct 10;382(3):790-801.
- Mahlknecht, U. et al: Assignment of the NAD-dependent deacetylase sirtuin 5 gene (SIRT5) to human chromosome band 6p23 by in situ hybridization. Cytogenet Genome Res. 2006;112(3-4):208-12.

Sample Data



Western blot analysis of SIRT5 in human liver tissue lysate with SIRT5 antibody at 1 µg/ml.

Anti-SIRT5

Rabbit Polyclonal Antibody

Catalog Number

S39-463R

Specific Lot Number

O2121-36

Purification

Affinity chromatography

Stability

1yr at -20°C from date of shipment

Storage & Shipping

Store product at -20°C. For optimal storage, aliquot antibody into smaller quantities after centrifugation and store at recommended temperature. For optimal performance, avoid repeated handling and multiple freeze/thaw cycles. Product shipped on ice packs.

To place your order, please contact us by phone 1-(604)-232-4600, fax 1-604-232-4601 or by email: orders@signalchem.com
www.signalchem.com

FOR IN VITRO RESEARCH PURPOSES ONLY. NOT INTENDED FOR USE IN HUMAN OR ANIMALS.