

## Anti-SIRT1

Rabbit Polyclonal Antibody

**Catalog # S35-463R**

Lot # O2121-33

### Cited Applications

WB, ELISA, IF

*Ideal working dilutions for each application should be empirically determined by the investigator.*

### Specificity

Recognizes the SIRT1 protein

### Cross Reactivity

Human, Mouse and Rat

### Host/Isotype/Clone#

Rabbit, IgG

### Immunogen

SIRT1 antibody was raised against a 19 amino acid synthetic peptide near the amino terminus of human SIRT1

### Formulation

PBS + 0.02% sodium azide

### Stability

1yr at -20°C from date of shipment

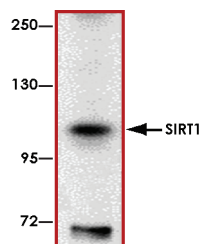
### Scientific Background

SIRT1 is a member of the sirtuin family of proteins which are homologs to the yeast Sir2 protein. Each member of the Sirtuin family contain sirtuin core domains. These proteins are grouped into four classes with SIRT1 being a member of class I. SIRT1 is a stress-response and chromatin-silencing factor (1). It is an NAD(+)-dependent histone deacetylase involved in various nuclear events such as transcription, DNA replication, and DNA repair. SIRT1 protein binds and deacetylates the p53 protein (2). Expression of wild type SIRT1 in human cells reduces the transcriptional activity of p53 indicating that SIRT1 is involved in the regulation of p53 function via deacetylation.

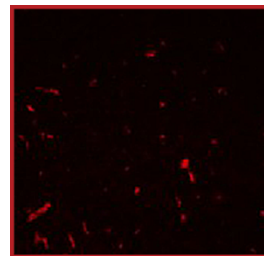
### References

1. Tanny, J. C. et al: An enzymatic activity in the yeast Sir2 protein that is essential for gene silencing. *Cell* 99: 735-745, 1999.
2. Vaziri, H. et al: hSIR2-SIRT1 functions as an NAD-dependent p53 deacetylase. *Cell* 107: 149-159, 2001.

### Sample Data



Western blot analysis of SIRT1 in mouse liver tissue lysate with SIRT1 antibody at 1 ug/ml.



Immunofluorescence of SIRT1 in rat lung tissue with SIRT1 antibody at 20 ug/ml.

## Anti-SIRT1

Rabbit Polyclonal Antibody

Catalog Number

**S35-463R**

Specific Lot Number

**O2121-33**

Purification

Affinity chromatography

Stability

1yr at -20°C from date of shipment

Storage & Shipping

Store product at -20°C. For optimal storage, aliquot antibody into smaller quantities after centrifugation and store at recommended temperature. For optimal performance, avoid repeated handling and multiple freeze/thaw cycles. Product shipped on ice packs.

To place your order, please contact us by phone 1-(604)-232-4600, fax 1-604-232-4601 or by email: [orders@signalchem.com](mailto:orders@signalchem.com)  
[www.signalchem.com](http://www.signalchem.com)

**FOR IN VITRO RESEARCH PURPOSES ONLY. NOT INTENDED FOR USE IN HUMAN OR ANIMALS.**