

## Anti-SUMO2/3

Rabbit Polyclonal Antibody

**Catalog # S294-63BR**

Lot # O2121-31

### Cited Applications

WB, ELISA, IF, IHC

*Ideal working dilutions for each application should be empirically determined by the investigator.*

### Specificity

Recognizes the SUMO2/3 protein

### Cross Reactivity

Human, Mouse and Rat

### Host/Isotype/Clone#

Rabbit, IgG

### Immunogen

SUMO2/3 antibody was raised against a 15 amino acid synthetic peptide near the carboxy terminus of human SUMO2.

### Formulation

PBS + 0.02% sodium azide

### Stability

1yr at -20°C from date of shipment

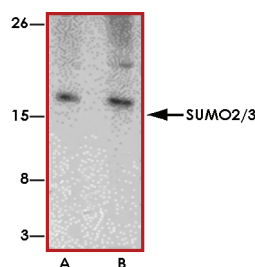
### Scientific Background

SUMO2 and 3 are members of the SUMO (small ubiquitin-like modifier) protein family which functions in a manner similar to ubiquitin. SUMO 3 is bound to target proteins as part of a post-translational modification system and modifies numerous cellular proteins and affect their metabolism and function. SUMO 2 and 3 are involved in a variety of cellular processes, such as nuclear transport, transcriptional regulation, apoptosis, and protein stability (1). SUMO3 predominantly detected in the cytoplasm (2). and SUMO2 is predominantly detected in nuclear bodies.

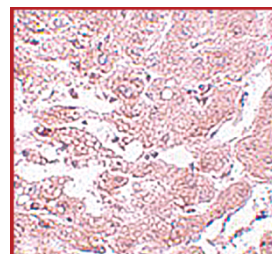
### References

1. Su, H.-L. et.al: Molecular features of human ubiquitin-like SUMO genes and their encoded proteins. *Gene* 296: 65-73, 2002.
2. Kamitani, T. et.al: Characterization of a second member of the sentrin family of ubiquitin-like proteins. *J. Biol. Chem.* 273: 11349-11353, 1998.

### Sample Data



Western blot analysis of SUMO2/3 in rat liver tissue lysate with SUMO2/3 antibody at (A) and (B) 2 µg/ml.



Immunohistochemistry of SUMO2/3 in rat liver tissue with SUMO2/3 antibody at 5 µg/ml.

## Anti-SUMO2/3

Rabbit Polyclonal Antibody

Catalog Number

**S294-63BR**

Specific Lot Number

**O2121-31**

Purification

Affinity chromatography

Stability

1yr at -20°C from date of shipment

Storage & Shipping

Store product at -20°C. For optimal storage, aliquot antibody into smaller quantities after centrifugation and store at recommended temperature. For optimal performance, avoid repeated handling and multiple freeze/thaw cycles. Product shipped on ice packs.

To place your order, please contact us by phone 1-(604)-232-4600, fax 1-604-232-4601 or by email: [orders@signalchem.com](mailto:orders@signalchem.com)  
[www.signalchem.com](http://www.signalchem.com)

**FOR IN VITRO RESEARCH PURPOSES ONLY. NOT INTENDED FOR USE IN HUMAN OR ANIMALS.**