

## Anti-DCAMKL2

Rabbit Polyclonal Antibody

Catalog # D15-63R

Lot # O2121-28

### Cited Applications

WB, ELISA, IHC

Ideal working dilutions for each application should be empirically determined by the investigator.

### Specificity

Recognizes the DCAMKL2 protein

### Cross Reactivity

Human, Mouse and Rat

### Host/Isotype/Clone#

Rabbit, IgG

### Immunogen

DCAMKL2 antibody was raised against a 14 amino acid synthetic peptide near the carboxy terminus of human DCAMKL2.

### Formulation

PBS + 0.02% sodium azide

### Stability

1yr at -20°C from date of shipment

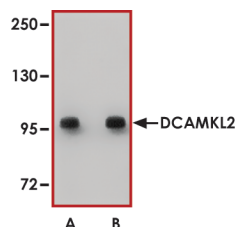
### Scientific Background

DCAMKL2 (also known as doublecortin-like kinase 2 or DCLK2) is a close homologue of doublecortin or DCX which is associated with intractable epilepsy in humans, due to a severe disorganization of the neocortex and hippocampus known as classical lissencephaly. DCX; DCLK2-null mice display frequent spontaneous seizures that originate in the hippocampus, with most animals dying in the first few months of life. DCX and DCLK2 are co-expressed in developing hippocampus, and, in their absence, there is dosage-dependent disrupted hippocampal lamination associated with a cell-autonomous simplification of pyramidal dendritic arborizations leading to reduced inhibitory synaptic tone (1).

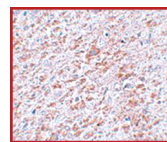
### References

1. Kerjan G. Et al: Mice lacking doublecortin and doublecortin-like kinase 2 display altered hippocampal neuronal maturation and spontaneous seizures. Proc Natl Acad Sci U S A. 2009 Apr 21;106(16):6766-71.

### Sample Data



Western blot analysis of DCAMKL2 in rat brain tissue lysate with DCAMKL2 antibody at (A) 1 and (B) 2 µg/ml.



Immunohistochemistry of DCAMKL2 in rat brain tissue with DCAMKL2 antibody at 5 µg/ml.

## Anti-DCAMKL2

Rabbit Polyclonal Antibody

Catalog Number

D15-63R

Specific Lot Number

O2121-28

Purification

Affinity chromatography

Stability

1yr at -20°C from date of shipment

Storage & Shipping

Store product at -20°C. For optimal storage, aliquot antibody into smaller quantities after centrifugation and store at recommended temperature. For optimal performance, avoid repeated handling and multiple freeze/thaw cycles. Product shipped on ice packs.