

Anti-DCAMKL1

Rabbit Polyclonal Antibody

Catalog # D14-63R

Lot # O2121-27

Cited Applications

WB, ELISA, IF, IHC

Ideal working dilutions for each application should be empirically determined by the investigator.

Specificity

Recognizes the DCAMKL1 protein

Cross Reactivity

Human, Mouse and Rat

Host/Isotype/Clone#

Rabbit, IgG

Immunogen

DCAMKL1 antibody was raised against a 14 amino acid synthetic peptide near the amino terminus of human DCAMKL1

Formulation

PBS + 0.02% sodium azide

Stability

1yr at -20°C from date of shipment

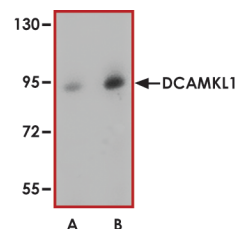
Scientific Background

DCAMKL1 or doublecortin-like kinase 1 contains two N-terminal doublecortin domains (which bind microtubules and regulate microtubule polymerization), a C-terminal serine/threonine protein kinase domain (which shows substantial homology to Ca²⁺/calmodulin-dependent protein kinase), and a serine/proline-rich domain in between the doublecortin and the protein kinase domains (which mediates multiple protein-protein interactions) (1). DCAMKL1 is a microtubule-associated kinase that can undergo autophosphorylation. DCAMKL1 has microtubule-polymerizing activity that is independent of its protein kinase activity (2). DCAMKL1 is involved in several different cellular processes, including neuronal migration, retrograde transport, neuronal apoptosis and neurogenesis.

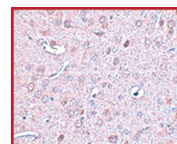
References

1. Ohmae, S. et.al: Molecular identification and characterization of a family of kinases with homology to Ca²⁺/calmodulin-dependent protein kinases I/IV. J. Biol. Chem. 281: 20427-20439, 2006
2. Lin, P. T. et.al: DCAMKL1 encodes a protein kinase with homology to doublecortin that regulates microtubule polymerization. J. Neurosci. 20: 9152-9161, 2000.

Sample Data



Western blot analysis of DCAMKL1 in human brain tissue lysate with DCAMKL1 antibody at (A) 0.5 and (B) 1 µg/ml.



Immunohistochemistry of DCAMKL1 in rat brain tissue with DCAMKL1 antibody at 2.5 µg/ml.

Anti-DCAMKL1

Rabbit Polyclonal Antibody

Catalog Number

D14-63R

Specific Lot Number

O2121-27

Purification
Stability
Storage & Shipping

Affinity chromatography
1yr at -20°C from date of shipment
Store product at -20°C. For optimal storage, aliquot antibody into smaller quantities after centrifugation and store at recommended temperature. For optimal performance, avoid repeated handling and multiple freeze/thaw cycles. Product shipped on ice packs.

To place your order, please contact us by phone 1-(604)-232-4600, fax 1-604-232-4601 or by email: orders@signalchem.com
www.signalchem.com

FOR IN VITRO RESEARCH PURPOSES ONLY. NOT INTENDED FOR USE IN HUMAN OR ANIMALS.