

Anti-RIPK1

Rabbit Polyclonal Antibody

Catalog # R07-63R

Lot # O2121-25

Cited Applications

WB, ELISA, IF, IHC

Ideal working dilutions for each application should be empirically determined by the investigator.

Specificity

Recognizes the RIPK1 protein

Cross Reactivity

Human, Mouse and Rat

Host/Isotype/Clone#

Rabbit, IgG

Immunogen

RIPK1 antibody was raised against a 15 amino acid synthetic peptide from near the amino terminus of human RIPK1

Formulation

PBS + 0.02% sodium azide

Stability

1yr at -20°C from date of shipment

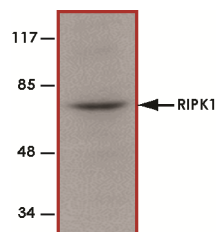
Scientific Background

RIPK1 or Receptor Interacting Protein Kinase 1 is a serine/threonine kinase that was originally identified as interacting with the cytoplasmic domain of FAS. RIPK1 has been deemed as an important element in the signal transduction machinery that mediates programmed cell death. RIPK1 has been shown to interact with TRADD, TRAF1 TRAF2 and TRAF3 and TRADD can act as an adaptor protein to recruit RIPK1 to the TNFR1 complex in a TNF-dependent process (1). TNF α is capable of activating the noncanonical NF- κ B pathway, but this activation of this pathway is negatively regulated by RIPK1 (2).

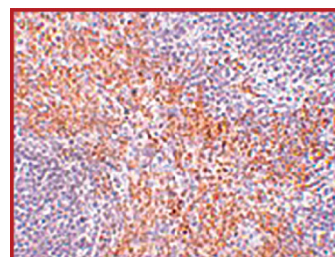
References

1. Hsu, H. et al: TNF-dependent recruitment of the protein kinase RIP to the TNF receptor-1 signaling complex. *Immunity* 4: 387-396, 1996.
2. Kim, J Y. et al: TNF α induced noncanonical NF- κ B activation is attenuated by RIP1 through stabilization of TRAF2. *J Cell Sci.* 2011 Feb 15;124(Pt 4):647-56.

Sample Data



Western blot analysis of RIPK1 in rat kidney tissue lysate with RIPK1 antibody at 1 ug/ml.



Immunohistochemistry of RIPK1 in mouse kidney tissue with RIPK1 antibody at 2.5 ug/ml.

Anti-RIPK1

Rabbit Polyclonal Antibody

Catalog Number

R07-63R

Specific Lot Number

O2121-25

Purification

Affinity chromatography

Stability

1yr at -20°C from date of shipment

Storage & Shipping

Store product at -20°C. For optimal storage, aliquot antibody into smaller quantities after centrifugation and store at recommended temperature. For optimal performance, avoid repeated handling and multiple freeze/thaw cycles. Product shipped on ice packs.

To place your order, please contact us by phone 1-(604)-232-4600, fax 1-604-232-4601 or by email: orders@signalchem.com
www.signalchem.com

FOR IN VITRO RESEARCH PURPOSES ONLY. NOT INTENDED FOR USE IN HUMAN OR ANIMALS.