

## Anti-KDM4A

Rabbit Polyclonal Antibody

Catalog # K424-63R

Lot # O2121-23

### Cited Applications

WB, ELISA, IHC

Ideal working dilutions for each application should be empirically determined by the investigator.

### Specificity

Recognizes the KDM4A protein

### Cross Reactivity

Human, Mouse and Rat

### Host/Isotype/Clone#

Rabbit, IgG

### Immunogen

KDM4A antibody was raised against a 14 amino acid synthetic peptide from near the center of human KDM4A

### Formulation

PBS + 0.02% sodium azide

### Stability

1yr at -20°C from date of shipment

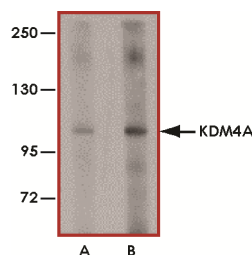
### Scientific Background

KDM4A or lysine (K)-specific demethylase 4A is a member of the Jumonji domain 2 (JMJD2) family that encodes a protein containing a JmjN domain, a JmjC domain, a JD2H domain, two TUDOR domains, and two PHD-type zinc fingers. KDM4A functions in euchromatin to remove histone methylation marks that are associated with active transcription (1). KDM4A also act as a trimethylation-specific demethylase those converting specific trimethylated histone residues to the dimethylated form, and as a transcriptional repressor (2).

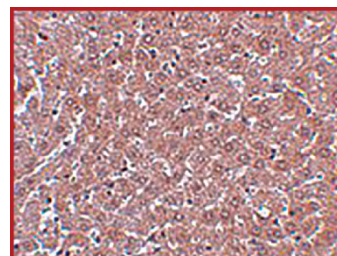
### References

1. Klose, R. J. et.al: The transcriptional repressor JHDM3A demethylates trimethyl histone H3 lysine 9 and lysine 36. *Nature* 442: 312-316, 2006.
2. Whetstine, J. R. et.al: Reversal of histone lysine trimethylation by the JMJD2 family of histone demethylases. *Cell* 125: 467-481, 2006.

### Sample Data



Western blot analysis of KDM4A in rat liver tissue lysate with KDM4A antibody at (A) 1 and (B) 2 µg/ml.



Immunohistochemistry of KDM4A in rat liver tissue with KDM4A antibody at 5 µg/ml.

## Anti-KDM4A

Rabbit Polyclonal Antibody

Catalog Number

K424-63R

Specific Lot Number

O2121-23

Purification

Affinity chromatography

Stability

1yr at -20°C from date of shipment

Storage & Shipping

Store product at -20°C. For optimal storage, aliquot antibody into smaller quantities after centrifugation and store at recommended temperature. For optimal performance, avoid repeated handling and multiple freeze/thaw cycles. Product shipped on ice packs.

To place your order, please contact us by phone 1-(604)-232-4600, fax 1-604-232-4601 or by email: [orders@signalchem.com](mailto:orders@signalchem.com)  
[www.signalchem.com](http://www.signalchem.com)

**FOR IN VITRO RESEARCH PURPOSES ONLY. NOT INTENDED FOR USE IN HUMAN OR ANIMALS.**