

Anti-TTBK2

Rabbit Polyclonal Antibody

Catalog # T18-63BR

Lot # O2121-20

Cited Applications

ELISA, IHC

Ideal working dilutions for each application should be empirically determined by the investigator.

Specificity

Recognizes the TTBK2 protein

Cross Reactivity

Human

Host/Isotype/Clone#

Rabbit, IgG

Immunogen

TTBK2 antibody was raised against an 18 amino acid synthetic peptide near the carboxy terminus of human TTBK2

Formulation

PBS + 0.02% sodium azide

Stability

1yr at -20°C from date of shipment

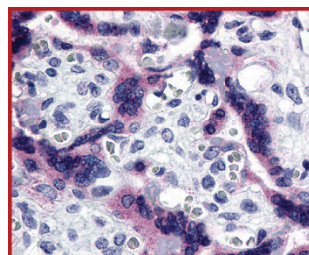
Scientific Background

TTBK2 or tau tubulin kinase 2 is a serine-threonine kinase that putatively phosphorylates tau and tubulin proteins. TTBK2 is a member of the casein kinase (CK1) group of eukaryotic protein kinases that is involved in tau phosphorylation and aggregation (1). Mutations in TTBK2 cause spinocerebellar ataxia type 11 (SCA11) (a neurodegenerative disease characterized by progressive ataxia and atrophy of the cerebellum and brainstem) (2).

References

1. Sato, S. et: Tau-tubulin kinase 1 (TTBK1), a neuron-specific tau kinase candidate, is involved in tau phosphorylation and aggregation. J. Neurochem. 98: 1573-1584, 2006.
2. Houlden, H. et.al: Mutations in TTBK2, encoding a kinase implicated in tau phosphorylation, segregate with spinocerebellar ataxia type 11. Nature Genet. 39: 1434-1436, 2007.

Sample Data



Immunohistochemistry of TTBK2 in human placenta tissue with TTBK2 antibody at 5 µg/ml.

Anti-TTBK2

Rabbit Polyclonal Antibody

Catalog Number

T18-63BR

Specific Lot Number

O2121-20

Purification

Affinity chromatography

Stability

1yr at -20°C from date of shipment

Storage & Shipping

Store product at -20°C. For optimal storage, aliquot antibody into smaller quantities after centrifugation and store at recommended temperature. For optimal performance, avoid repeated handling and multiple freeze/thaw cycles. Product shipped on ice packs.

To place your order, please contact us by phone 1-(604)-232-4600, fax 1-604-232-4601 or by email: orders@signalchem.com
www.signalchem.com

FOR IN VITRO RESEARCH PURPOSES ONLY. NOT INTENDED FOR USE IN HUMAN OR ANIMALS.