

Anti-LKB1 (STK11)

Rabbit Polyclonal Antibody

Catalog # L15-63R

Lot # O2121-2

Cited Applications

WB, ELISA

Ideal working dilutions for each application should be empirically determined by the investigator.

Specificity

Recognizes the LKB1 (STK11) protein

Cross Reactivity

Human and Mouse

Host/Isotype/Clone#

Rabbit, IgG

Immunogen

LKB1 antibody was raised against a 15 amino acid synthetic peptide from near the carboxy terminus of human LKB1

Formulation

PBS + 0.02% sodium azide

Stability

1yr at -20°C from date of shipment

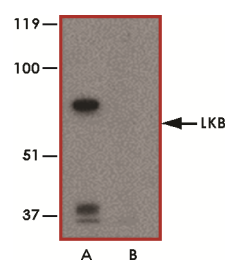
Scientific Background

LKB1(STK11) is a member of the serine/threonine kinase family which regulates cell polarity and functions as a tumor suppressor. STK11 is a critical barrier to pulmonary tumorigenesis which controlling initiation, differentiation, and metastasis. STK11 plays a central role in restricting HSC entry into cell cycle and in broadly maintaining energy homeostasis in hematopoietic cells through a novel metabolic checkpoint (1). STK11 serves as an essential regulator of HSCs and hematopoiesis, and more generally, points to the critical importance of coupling energy metabolism and stem cell homeostasis (2).

References

1. Gurumurthy, S. et.al: The Lkb1 metabolic sensor maintains haematopoietic stem cell survival. Nature 468: 659-663, 2010. Note: Erratum: Nature 476: 114 only, 2011.
2. Gan, B.et.al: Lkb1 regulates quiescence and metabolic homeostasis of haematopoietic stem cells. Nature 468: 701-704, 2010.

Sample Data



Western blot analysis of LKB1 in PC-3 cell lysate with LKB1 antibody at 1 µg/ml in the (A) absence or (B) presence of blocking peptide.

Anti-LKB1 (STK11)

Rabbit Polyclonal Antibody

Catalog Number

L15-63R

Specific Lot Number

O2121-2

Purification

Affinity chromatography

Stability

1yr at -20°C from date of shipment

Storage & Shipping

Store product at -20°C. For optimal storage, aliquot antibody into smaller quantities after centrifugation and store at recommended temperature. For optimal performance, avoid repeated handling and multiple freeze/thaw cycles. Product shipped on ice packs.

To place your order, please contact us by phone 1-(604)-232-4600, fax 1-604-232-4601 or by email: orders@signalchem.com
www.signalchem.com

FOR IN VITRO RESEARCH PURPOSES ONLY. NOT INTENDED FOR USE IN HUMAN OR ANIMALS.