

Anti-ZIP11

Rabbit Polyclonal Antibody

Catalog # Z45-363R

Lot # O2121-18

Cited Applications

WB, ELISA, IHC

Ideal working dilutions for each application should be empirically determined by the investigator.

Specificity

Recognizes the ZIP11 protein

Cross Reactivity

Human, Mouse and Rat

Host/Isotype/Clone#

Rabbit, IgG

Immunogen

ZIP11 antibody was raised against a 15 amino acid synthetic peptide near the center of the human ZIP11

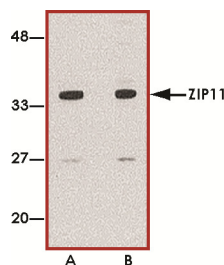
Formulation

PBS + 0.02% sodium azide

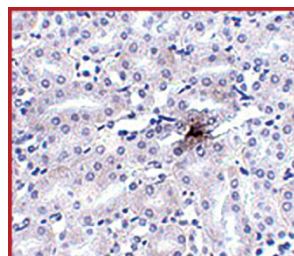
Stability

1yr at -20°C from date of shipment

Sample Data



Western blot analysis of ZIP11 in mouse kidney tissue lysate with ZIP11 antibody at (A) 1 and (B) 2 ug/ml.



Immunohistochemistry of ZIP11 in mouse kidney tissue with ZIP11 antibody at 2.5 ug/ml.

Anti-ZIP11

Rabbit Polyclonal Antibody

Catalog Number

Z45-363R

Specific Lot Number

O2121-18

Purification Affinity chromatography

Stability 1yr at -20°C from date of shipment

Storage & Shipping

Store product at -20°C. For optimal storage, aliquot antibody into smaller quantities after centrifugation and store at recommended temperature. For optimal performance, avoid repeated handling and multiple freeze/thaw cycles. Product shipped on ice packs.

To place your order, please contact us by phone 1-(604)-232-4600, fax 1-604-232-4601 or by email: orders@signalchem.com
www.signalchem.com

FOR IN VITRO RESEARCH PURPOSES ONLY. NOT INTENDED FOR USE IN HUMAN OR ANIMALS.