

Anti-ASK1

Rabbit Polyclonal Antibody

Catalog # M13-63R

Lot # O2109-5

Cited Applications

WB, ELISA, ICC, IF

Ideal working dilutions for each application should be empirically determined by the investigator.

Specificity

Recognizes the ASK1 protein

Cross Reactivity

Human

Host/Isotype/Clone#

Rabbit, IgG

Immunogen

ASK1 antibody was raised against a peptide corresponding to amino acids near the carboxy terminus of human ASK1. This sequence is different from that of mouse by last two amino acids.

Formulation

PBS + 0.02% sodium azide

Stability

1yr at -20°C from date of shipment

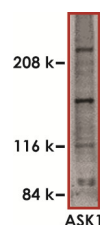
Scientific Background

ASK1, also known as MAPKKK5, activates MKK3, MKK4 (SEK1), and MKK6. Overexpression of ASK1 induces apoptotic cell death, and ASK1 is activated in cells treated with tumor necrosis factor- α (1). ASK1 interacts with members of the TRAF family and is activated by TRAF2 in the TNF-signaling pathway. After activation by TRAF2, ASK1 activates MKK4, which in turn activates JNK. Thus, ASK1 is a mediator of TRAF2-induced JNK activation (2).

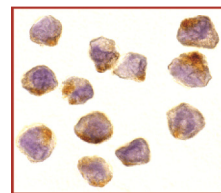
References

1. Smith, C. Ichijo, H. et al: Induction of apoptosis by ASK1, a mammalian MAPKKK that activates SAPK/JNK and p38 signaling pathways. *Science* 275: 90-94, 1997.
2. Nishitoh, H. et al: ASK1 is essential for JNK/SAPK activation by TRAF2. *Molec. Cell* 2: 389-395, 1998.

Sample Data



Western blot analysis of ASK1 in SW1353 whole cell lysate with ASK1 antibody at 1:500 dilution.



Immunocytochemistry of ASK1 in A431 cells with ASK1 antibody at 10 µg/ml.

Anti-ASK1

Rabbit Polyclonal Antibody

Catalog Number

M13-63R

Specific Lot Number

O2109-5

Purification

Affinity chromatography

Stability

1yr at -20°C from date of shipment

Storage & Shipping

Store product at -20°C. For optimal storage, aliquot antibody into smaller quantities after centrifugation and store at recommended temperature. For optimal performance, avoid repeated handling and multiple freeze/thaw cycles. Product shipped on ice packs.

To place your order, please contact us by phone 1-(604)-232-4600, fax 1-604-232-4601 or by email: orders@signalchem.com
www.signalchem.com

FOR IN VITRO RESEARCH PURPOSES ONLY. NOT INTENDED FOR USE IN HUMAN OR ANIMALS.