

## Anti-STAT1 alpha

Rabbit Polyclonal Antibody

**Catalog # S52-63BR**

Lot # O2109-2

### Cited Applications

WB, ELISA, ICC, IP

*Ideal working dilutions for each application should be empirically determined by the investigator.*

### Specificity

Recognizes the STAT1 protein

### Cross Reactivity

Human, Mouse and Rat

### Host/Isotype/Clone#

Rabbit, IgG

### Immunogen

STAT1 antibody was raised against a peptide corresponding to amino acids near the carboxy terminus of human STAT1 alpha. The sequences differ from the murine corresponding sequences by four amino acids.

### Formulation

PBS + 0.02% sodium azide

### Stability

1yr at -20°C from date of shipment

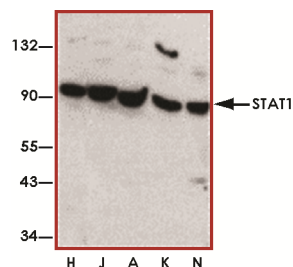
### Scientific Background

STAT1 is a member of the signal transducers and activators of transcription (STAT) family of proteins that carry out a dual function: signal transduction and activation of transcription. STAT1 transcription factor is specific for the IFN pathway and plays a central role in mediating many, if not all, IFN-dependent biological responses (1). Presence of STAT1 leads to an efficient antiviral response when cells were infected with virus suggesting that a STAT-dependent pathway is activated following virus infection by endogenously produced IFN. Virus-induced STAT protein translocation from the cytoplasmic compartment can be detected within 3 h of infection.

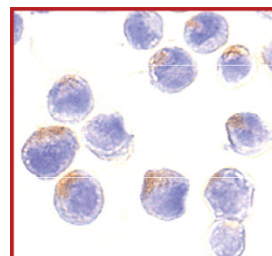
### References

1. Improtta, T. et al: Susceptibility to virus infection is determined by a Stat-mediated response to the autocrine effect of virus-induced type I interferon. Cytokine. 1997 Jun;9(6):383-93.

### Sample Data



Western blot analysis of STAT1 alpha in whole cell lysates from HeLa (H), Jurkat (J), A431 (A), K562 (K), and NIH3T3 (N) cells, with STAT1 alpha antibody at 1 µg/ml.



Immunocytochemistry of STAT1 alpha in HeLa cells with STAT1 alpha antibody at 10 µg/ml.

## Anti-STAT1 alpha

Rabbit Polyclonal Antibody

Catalog Number

**S52-63BR**

Specific Lot Number

**O2109-2**

Purification

Affinity chromatography

Stability

1yr at -20°C from date of shipment

Storage & Shipping

Store product at -20°C. For optimal storage, aliquot antibody into smaller quantities after centrifugation and store at recommended temperature. For optimal performance, avoid repeated handling and multiple freeze/thaw cycles. Product shipped on ice packs.

To place your order, please contact us by phone 1-(604)-232-4600, fax 1-604-232-4601 or by email: [orders@signalchem.com](mailto:orders@signalchem.com)  
[www.signalchem.com](http://www.signalchem.com)

**FOR IN VITRO RESEARCH PURPOSES ONLY. NOT INTENDED FOR USE IN HUMAN OR ANIMALS.**