

Anti-CHK2

Rabbit Polyclonal Antibody

Catalog # C48-63R

Lot # O2109-19

Cited Applications

WB, ELISA, ICC

Ideal working dilutions for each application should be empirically determined by the investigator.

Specificity

Recognizes the CHK2 protein

Cross Reactivity

Human, Mouse and Rat

Host/Isotype/Clone#

Rabbit, IgG

Immunogen

CHK2 antibody was raised against a synthetic peptide corresponding to amino acids near the amino terminus of human CHK2

Formulation

PBS + 0.02% sodium azide

Stability

1yr at -20°C from date of shipment

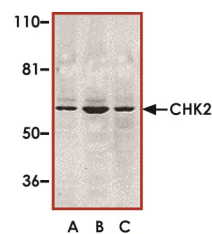
Scientific Background

CHK2 is rapidly phosphorylated and activated in response to replication blocks and DNA damage; the response to DNA damage occurs in an ataxia telangiectasia mutated (ATM)-dependent manner (1). Expression of wild-type Chk2 leads to increased p53 stabilization after DNA damage, whereas expression of a dominant-negative Chk2 mutant abrogated both phosphorylation of p53 on Ser-20 and p53 stabilization (2).

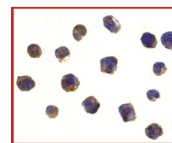
References

1. Matsuoka, S. et al: Linkage of ATM to cell cycle regulation by the Chk2 protein kinase. *Science*. 1998 Dec 4; 282(5395):1893-7.
2. Chehab NH. et al: Chk2/hCds1 functions as a DNA damage checkpoint in G(1) by stabilizing p53. *Genes Dev*. 2000 Feb 1; 14(3):278-88.

Sample Data



Western blot analysis of CHK2 expression in K562 (A), Jurkat (B), and HL-60 (C) whole cell lysates with CHK2 antibody at 1 ug/ml.



Immunocytochemistry of CHK2 in Jurkat cells with CHK2 antibody at 1 ug/ml.

Anti-CHK2

Rabbit Polyclonal Antibody

Catalog Number

C48-63R

Specific Lot Number

O2109-19

Purification

Affinity chromatography

Stability

1yr at -20°C from date of shipment

Storage & Shipping

Store product at -20°C. For optimal storage, aliquot antibody into smaller quantities after centrifugation and store at recommended temperature. For optimal performance, avoid repeated handling and multiple freeze/thaw cycles. Product shipped on ice packs.

To place your order, please contact us by phone 1-(604)-232-4600, fax 1-604-232-4601 or by email: orders@signalchem.com
www.signalchem.com

FOR IN VITRO RESEARCH PURPOSES ONLY. NOT INTENDED FOR USE IN HUMAN OR ANIMALS.