

## Anti-RIPK2

Rabbit Polyclonal Antibody

**Catalog # R08-63BR**

Lot # O2109-14

### Cited Applications

WB, ELISA, ICC, IF

Ideal working dilutions for each application should be empirically determined by the investigator.

### Specificity

Recognizes the RIPK2 protein

### Cross Reactivity

Human

### Host/Isotype/Clone#

Rabbit, IgG

### Immunogen

RIPK2 antibody was raised against a peptide corresponding to amino acids near the amino terminus of human RIPK2.

### Formulation

PBS + 0.02% sodium azide

### Stability

1yr at -20°C from date of shipment

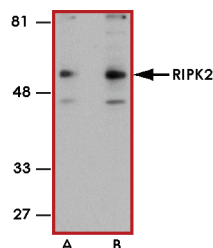
### Scientific Background

RIPK2 (RIP2; RICK) is a death domain-containing protein kinase encoding a predicted 540-amino acid protein which contains an N-terminal serine/threonine kinase catalytic domain and a C-terminal caspase activation and recruitment domain. RIPK2 is thought to regulate apoptosis induced by the FAS receptor pathway (1). RIPK2 has been shown to specifically interact with the CARD of ICE/caspase-1 and this interaction correlates with the processing of pro-caspase-1 and the formation of the active caspase-1 p20 (2).

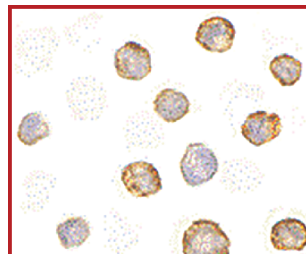
### References

1. Inohara, N. et al: RICK, a novel protein kinase containing a caspase recruitment domain, interacts with CLARP and regulates CD95-mediated apoptosis. J. Biol. Chem. 273: 12296-12300, 1998. Note: Erratum: J. Biol. Chem 273: 18675 only, 1998.
2. Thome, M. et al: Identification of CARDIAK, a RIP-like kinase that associates with caspase-1. Curr. Biol. 8: 885-888, 1998.

### Sample Data



Western blot analysis of RIPK2 in A431 (A) and K562 (K) whole cell lysate with RIPK2 antibody at 1:1000 dilution.



Immunocytochemistry of RIPK2 in A431 cells with RIPK2 antibody at 10 µg/ml.

## Anti-RIPK2

Rabbit Polyclonal Antibody

Catalog Number

**R08-63BR**

Specific Lot Number

**O2109-14**

Purification

Affinity chromatography

Stability

1yr at -20°C from date of shipment

Storage & Shipping

Store product at -20°C. For optimal storage, aliquot antibody into smaller quantities after centrifugation and store at recommended temperature. For optimal performance, avoid repeated handling and multiple freeze/thaw cycles. Product shipped on ice packs.

To place your order, please contact us by phone 1-(604)-232-4600, fax 1-604-232-4601 or by email: [orders@signalchem.com](mailto:orders@signalchem.com)  
[www.signalchem.com](http://www.signalchem.com)

**FOR IN VITRO RESEARCH PURPOSES ONLY. NOT INTENDED FOR USE IN HUMAN OR ANIMALS.**