

Anti-IKK beta

Rabbit Polyclonal Antibody

Catalog # I03-63R

Lot # O2109-11

Cited Applications

WB, ELISA, ICC, IF

Ideal working dilutions for each application should be empirically determined by the investigator.

Specificity

Recognizes the IKK beta protein and has no cross response to IKK alpha or IKK gamma

Cross Reactivity

Human

Host/Isotype/Clone#

Rabbit, IgG

Immunogen

IKK beta antibody was raised against a peptide corresponding to amino acids near the carboxy terminus of human IKK beta, which differs from corresponding murine sequence by one amino acid.

Formulation

PBS + 0.02% sodium azide

Stability

1yr at -20°C from date of shipment

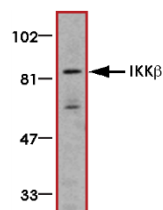
Scientific Background

IKK beta is a serine/threonine protein kinase that phosphorylates the I-kappa-B protein which is an inhibitor of the transcription factor NF-kappa-B complex. Phosphorylation of I-kappa-B protein triggers the degradation of the inhibitor via the ubiquitination pathway, thereby activating NF-kappa-B complex. The activity of IKK beta is stimulated by TNF and IL1 and IKK beta forms a heterodimer that interacts with NIK (1). Overexpression of catalytically inactive IKK beta blocks cytokine-induced NF-kappa-B activation. Aspirin and sodium salicylate can specifically inhibit IKK beta activity in vitro and in vivo by binding to IKKbeta to reduce ATP binding (2).

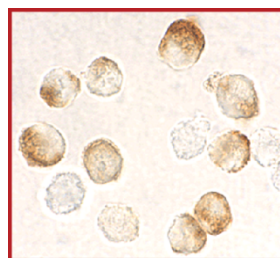
References

1. Woronicz, J D. et al: I-kappaB kinase-beta: NF-kappa-B activation and complex formation with I-kappaB kinase-alpha and NIK. *Science* 278: 866-869, 1997.
2. Yin, M.-J. et al: The anti-inflammatory agents aspirin and salicylate inhibit the activity of I-kappa-B kinase-beta. *Nature* 396: 77-80, 1998.

Sample Data



Western blot analysis of IKK beta in Jurkat whole cell lysate with IKK beta antibody at 1:500 dilution.



Immunocytochemistry staining of HeLa cells using IKK beta antibody at 10 µg/ml.

Anti-IKK beta

Rabbit Polyclonal Antibody

Catalog Number

I03-63R

Specific Lot Number

O2109-11

Purification

Affinity chromatography

Stability

1yr at -20°C from date of shipment

Storage & Shipping

Store product at -20°C. For optimal storage, aliquot antibody into smaller quantities after centrifugation and store at recommended temperature. For optimal performance, avoid repeated handling and multiple freeze/thaw cycles. Product shipped on ice packs.

To place your order, please contact us by phone 1-(604)-232-4600, fax 1-604-232-4601 or by email: orders@signalchem.com
www.signalchem.com

FOR IN VITRO RESEARCH PURPOSES ONLY. NOT INTENDED FOR USE IN HUMAN OR ANIMALS.