

## IκBβ Protein

Full-length recombinant protein expressed in E. coli cells

**Catalog # I21-30G**

Lot # N260-3

### Product Description

Recombinant full-length human IκBβ was expressed in E. coli cells using an N-terminal GST tag. The gene accession number is [NM\\_002503](#).

### Gene Aliases

NFKBIB, TRIP9

### Formulation

Recombinant protein stored in 50mM Tris-HCl, pH 7.5, 150mM NaCl, 10mM glutathione, 0.1mM EDTA, 0.25mM DTT, 0.1mM PMSF, 25% glycerol.

### Storage and Stability

Store product at  $-70^{\circ}\text{C}$ . For optimal storage, aliquot target into smaller quantities after centrifugation and store at recommended temperature. For most favorable performance, avoid repeated handling and multiple freeze/thaw cycles.

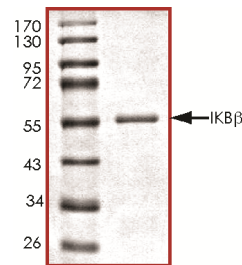
### Scientific Background

IκBβ is part of the NFκB complex and it inactivates NFκB complex by binding to it and trapping it in the cytoplasm. Phosphorylation of serine residues on IκBβ mediated by IκB kinases leads to its destruction via the ubiquitination pathway thereby allowing activation of the NFκB complex which translocates into the nucleus and binds DNA at kappa-B-binding motifs (1). The PEST domain of IκBβ can interact with two proteins KBRAS1 and KBRAS2 and this interaction can decrease the rate of degradation IκBβ. IκBβ has been shown to participate in multiple signaling pathways including adipocytokine signaling pathway, B-cell receptor signaling pathway, T-cell receptor signaling pathway and Hypoxia (2).

### References

1. Fenwick, C. et al: A subclass of Ras proteins that regulate the degradation of I-kappa-B. *Science* 287: 869-873, 2000.
2. Hoffmann, A. et al: The I-kappa-B-NF-kappa-B signaling module: temporal control and selective gene activation. *Science* 298: 1241-1245, 2002.

### Purity



The purity of IκBβ was determined to be **>95%** by densitometry. Approx. MW **56kDa**.

## IκBβ Protein

Full-length recombinant protein expressed in E. coli cells

Catalog Number **I21-30G**

Specific Lot Number **N260-3**

Purity	>95%
Concentration	0.2 µg/µl
Stability	1yr at $-70^{\circ}\text{C}$ from date of shipment
Storage & Shipping	Store product at $-70^{\circ}\text{C}$ . For optimal storage, aliquot target into smaller quantities after centrifugation and store at recommended temperature. For most favorable performance, avoid repeated handling and multiple freeze/thaw cycles. Product shipped on dry ice.

To place your order, please contact us by phone 1-(604)-232-4600, fax 1-604-232-4601 or by email: [orders@signalchem.com](mailto:orders@signalchem.com)  
[www.signalchem.com](http://www.signalchem.com)

**FOR IN VITRO RESEARCH PURPOSES ONLY. NOT INTENDED FOR USE IN HUMAN OR ANIMALS.**