

Catalogue #	Aliquot Size
P61-10G -05	5 µg
P61-10G -10	10 µg
P61-10G -20	20 µg

PKC α , Active

Full-length recombinant protein expressed in Sf9 cells

Catalog # P61-10G

Lot # N258-3

Product Description

Recombinant full-length xenopus PKC α was expressed by baculovirus in Sf9 insect cells using an N-terminal GST tag. The gene accession number is [BC078065](#).

Gene Aliases

PRKCA

Formulation

Recombinant protein stored in 50mM Tris-HCl, pH 7.5, 150mM NaCl, 10mM glutathione, 0.1mM EDTA, 0.25mM DTT, 0.1mM PMSF, 25% glycerol.

Storage and Stability

Store product at -70°C . For optimal storage, aliquot target into smaller quantities after centrifugation and store at recommended temperature. For most favorable performance, avoid repeated handling and multiple freeze/thaw cycles.

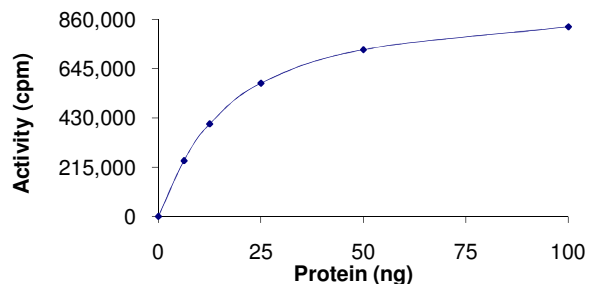
Scientific Background

PKC α is a member of the protein kinase C (PKC) family of serine- and threonine-specific protein kinases that can be activated by calcium and the second messenger diacylglycerol. PKC-alpha has been reported to play roles in many different cellular processes, such as cell adhesion, cell transformation, cell cycle checkpoint, and cell volume control(1). PKC α has been assigned to the chromosome region 17q22-q23.2 and has been identified as a fundamental regulator of cardiac contractility and Ca(2+) handling in myocytes (2).

References

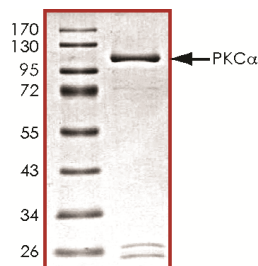
1. Coussens, L. et al: Multiple, distinct forms of bovine and human protein kinase C suggest diversity in cellular signaling pathways. *Science* 233: 859-866, 1986.
2. Braz, J C. et al: PKC-alpha regulates cardiac contractility and propensity toward heart failure. *Nature Med.* 10: 248-254, 2004.

Specific Activity



The specific activity of PKC α was determined to be **252 nmol /min/mg** as per activity assay protocol.

Purity



The purity was determined to be **>95%** by densitometry. Approx. MW **103kDa**.

PKC α , Active

Full-length recombinant protein expressed in Sf9 cells

Catalog Number	P61-10G
Specific Activity	252 nmol/min/mg
Specific Lot Number	N258-3
Purity	>95%
Concentration	0.1µg/µl
Stability	1yr At -70°C from date of shipment
Storage & Shipping	Store product at -70°C . For optimal storage, aliquot target into smaller quantities after centrifugation and store at recommended temperature. For most favorable performance, avoid repeated handling and multiple freeze/thaw cycles. Product shipped on dry ice.

To place your order, please contact us by phone 1-(604)-232-4600, fax 1-604-232-4601 or by email: orders@signalchem.com
www.signalchem.com

FOR IN VITRO RESEARCH PURPOSES ONLY. NOT INTENDED FOR USE IN HUMAN OR ANIMALS.

Activity Assay Protocol

Reaction Components

Active Kinase (Catalog #: P61-10G)

Active PKCa (0.1 µg/µl) diluted with Kinase Dilution Buffer I (Catalog #: K21-09) and assayed as outlined in sample activity plot. (Note: these are suggested working dilutions and it is recommended that the researcher perform a serial dilution of Active PKCa for optimal results).

Kinase Dilution Buffer I (Catalog #: K21-09)

Kinase Assay Buffer I (Catalog #: K01-09) diluted at a 1:4 ratio (5X dilution) with distilled H₂O.

Kinase Assay Buffer I (Catalog #: K01-09)

Buffer components: 25mM MOPS, pH 7.2, 12.5mM β-glycerol-phosphate, 25mM MgCl₂, 5mM EGTA, 2mM EDTA. Add 0.25mM DTT to Kinase Assay Buffer prior to use.

[³³P]-ATP Assay Cocktail

Prepare 250µM [³³P]-ATP Assay Cocktail in a designated radioactive working area by adding the following components: 150µl of 10mM ATP Stock Solution (Catalog #: A50-09), 100µl [³³P]-ATP (1mCi/100µl), 5.75ml of Kinase Assay Buffer I (Catalog #: K01-09). Store 1ml aliquots at -20°C.

10mM ATP Stock Solution (Catalog #: A50-09)

Prepare ATP stock solution by dissolving 55mg of ATP in 10ml of Kinase Assay Buffer I (Catalog #: K01-09). Store 200µl aliquots at -20°C.

Substrate (Catalog #: C50-58)

CREBtide synthetic peptide substrate (KRREILSRPSYR) diluted in distilled H₂O to a final concentration of 1mg/ml.

Assay Protocol

- Step 1.** Thaw [³³P]-ATP Assay Cocktail in shielded container in a designated radioactive working area.
- Step 2.** Thaw the Active PKCa, Kinase Assay Buffer, Substrate and Kinase Dilution Buffer on ice.
- Step 3.** In a pre-cooled microfuge tube, add the following reaction components bringing the initial reaction volume up to 20µl:
 - Component 1.** 10µl of diluted Active PKCa (Catalog #P61-10G)
 - Component 2.** 5µl of 1mg/ml stock solution of substrate (Catalog #C50-58)
 - Component 3.** 2.5µl PKC lipid activator (Catalog #L51-39) (0.5 mg/ml phosphatidylserine and 0.05 mg/ml diacylglycerol in 20 mM MOPS, pH 7.2, containing 1 mM CaCl₂). Sonicate lipid for 1 minute prior to use
 - Component 4.** 2.5µl distilled H₂O (4°C)
- Step 4.** Set up the blank control as outlined in step 3, excluding the addition of the substrate. Replace the substrate with an equal volume of distilled H₂O.
- Step 5.** Initiate the reaction by the addition of 5µl [³³P]-ATP Assay Cocktail bringing the final volume up to 25µl and incubate the mixture in a water bath at 30°C for 15 minutes.
- Step 6.** After the 15 minute incubation period, terminate the reaction by spotting 20µl of the reaction mixture onto individual pre-cut strips of phosphocellulose P81 paper.
- Step 7.** Air dry the pre-cut P81 strip and sequentially wash in a 1% phosphoric acid solution (dilute 10ml of phosphoric acid and make a 1L solution with distilled H₂O) with constant gentle stirring. It is recommended that the strips be washed a total of 3 intervals for approximately 10 minutes each.
- Step 8.** Count the radioactivity on the P81 paper in the presence of scintillation fluid in a scintillation counter.
- Step 9.** Determine the corrected cpm by removing the blank control value (see Step 4) for each sample and calculate the kinase specific activity as outlined below.

Calculation of [³³P]-ATP Specific Activity (SA) (cpm/pmol)

Specific activity (SA) = cpm for 5µl [³³P]-ATP / pmoles of ATP (in 5µl of a 250µM ATP stock solution, i.e., 1250 pmoles)

Kinase Specific Activity (SA) (pmol/min/µg or nmol/min/mg)

Corrected cpm from reaction / [(SA of ³³P-ATP in cpm/pmol)*(Reaction time in min)*(Enzyme amount in µg or mg)]*[(Reaction Volume) / (Spot Volume)]

To place your order, please contact us by phone 1-(604)-232-4600, fax 1-604-232-4601 or by email: orders@signalchem.com
www.signalchem.com

FOR IN VITRO RESEARCH PURPOSES ONLY. NOT INTENDED FOR USE IN HUMAN OR ANIMALS.