

Anti-MEK1/2

Rabbit Polyclonal Antibody

Catalog # M02-63R

Lot # M226-3

Cited Applications

- Western blot (1:1000)

Ideal working dilutions for each application should be empirically determined by the investigator.

Specificity

Recognizes the MEK1 and MEK2 proteins

Cross Reactivity

- Western blot human MEK1 and MEK2

MEK1 and MEK2 from other species may also be detectable

Host

Rabbit

Immunogen

Synthesized peptide corresponding to human MEK1 (210-220 aa) protein

Formulation

TBS, 50% glycerol

Stability

Store at 4°C (add 0.1% NaN₃) for several months, and at -20°C for longer periods. For optimal storage, aliquot antibody into smaller quantities after centrifugation and store at recommended temperature. For optimal performance, avoid repeated handling and multiple freeze/thaw cycles.

Scientific Background

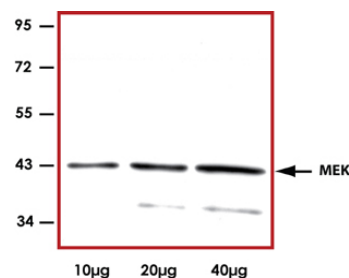
MEK1 is a member of the dual specificity protein kinase family that acts as a mitogen-activated protein kinase (MAPK) kinase. MEK1 lies upstream of MAPK/ERK and stimulates the enzymatic activity of MAPK/ERK upon a wide variety of extra- and intracellular signals. As an essential component of MAPK/ERK signal transduction pathway, MEK1 is involved in many cellular processes such as proliferation, differentiation, transcription regulation and development (1). Constitutive activation of MEK1 results in cellular transformation. Thus, MEK1 represents a likely target for pharmacologic intervention in proliferative disease such as cancer (2).

References

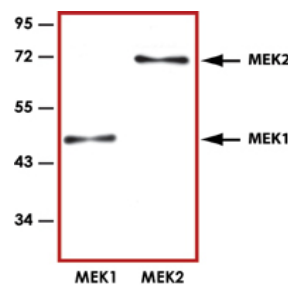
1. Seger, R. et al: The MAPK signaling cascade. FASEB J. 9: 726-735, 1995.
2. Sebolt-Leopold, J S. et al: Blockade of the MAP kinase pathway suppresses growth of colon tumors in vivo. Nature Med. 5: 810-816, 1999.

Sample Data

To place your order, please contact us by phone 1-(604)-232-4600, fax 1-604-232-4601 or by email: orders@signalchem.com
www.signalchem.com



Representative western blot with Anti-MEK1/2 (1:1000) using 10 µg, 20 µg, and 40µg of 293 cell lysate.



Representative immunoprecipitation with Anti-MEK1/2 (1:1000) using 30ng of His-MEK1 and GST-MEK2 recombinant proteins.

Anti-MEK1/2

Rabbit Polyclonal Antibody

Catalog Number

M02-63R

Specific Lot Number

M226-3

Purification

Affinity purified using Protein G

Concentration

1.0 µg/µL

Stability

1yr at -20°C from date of shipment

Storage & Shipping

Store product at -20°C. For optimal storage, aliquot antibody into smaller quantities after centrifugation and store at recommended temperature. For optimal performance, avoid repeated handling and multiple freeze/thaw cycles. Product shipped on ice packs.