

Anti-β-Actin

Mouse Monoclonal Antibody

Catalog # **A03-60BM**

Lot # M190-4

Cited Applications

- Western blot (1:1000)

Ideal working dilutions for each application should be empirically determined by the investigator.

Specificity

Recognizes the β-actin protein

Cross Reactivity

- Western blot β-actin from human and mouse cells

β-actin from other species may also be detectable

Host/Isotype/Clone#

Mouse, IgG2b, BA3R

Immunogen

Slightly modified human β-cytoplasmic actin (2-15aa) peptide

Formulation

10mM PBS, pH7.2

Stability

Store at 4°C (add 0.1% NaN₃) for several months, and at -20°C for longer periods. For optimal storage, aliquot antibody into smaller quantities after centrifugation and store at recommended temperature. For optimal performance, avoid repeated handling and multiple freeze/thaw cycles.

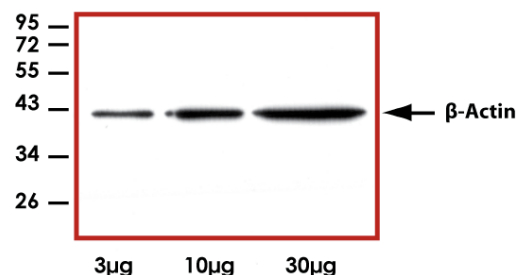
Scientific Background

Actin, a ubiquitous protein in eukaryotes, is the major component of the cytoskeleton. At least six isoforms are known in mammals. Nonmuscle β- and γ-actin, also known as cytoplasmic actin, are predominantly expressed in nonmuscle cells, controlling cell structure and motility (1). α-cardiac and α-skeletal actin are expressed in striated cardiac and skeletal muscles, respectively; two smooth muscle actins, α- and γ-actin, are found primarily in vascular smooth muscle and enteric smooth muscle, respectively. These actin isoforms regulate contractile potentials for muscle cells (1).

References

1. Herman, I.M. (1993) *Curr. Opin. Cell Biol.* 5, 48-55.

Sample Data



Representative western blot with Anti-β-Actin (1:1000) using 3 µg, 10 µg, and 30 µg of 293 cell lysate.

Anti-β-Actin

Mouse Monoclonal Antibody

Catalog Number	A03-60BM
Specific Lot Number	M190-4
Purification	Affinity Chromatography
Concentration	1.0 µg/µL
Stability	1yr at -20°C from date of shipment
Storage & Shipping	Store product at -20°C. For optimal storage, aliquot antibody into smaller quantities after centrifugation and store at recommended temperature. For optimal performance, avoid repeated handling and multiple freeze/thaw cycles. Product shipped on ice packs.

To place your order, please contact us by phone 1-(604)-232-4600, fax 1-604-232-4601 or by email: orders@signalchem.com
www.signalchem.com

FOR IN VITRO RESEARCH PURPOSES ONLY. NOT INTENDED FOR USE IN HUMAN OR ANIMALS.