

Anti-HSF1

Rabbit Polyclonal Antibody

Catalog # H25-63R

Lot # M132-8

Cited Applications

- Western blot (1:1000)

Ideal working dilutions for each application should be empirically determined by the investigator.

Specificity

Recognizes the HSF1 protein

Cross Reactivity

- Western blot human HSF1

HSF1 from other species may also be detectable

Host

Rabbit

Immunogen

Synthetic peptide corresponding to amino acids 305-309 of human HSF1

Formulation

PBS, pH7.4, 0.02%NaN₃, 50% glycerol

Stability

Store at 4°C (add 0.1% NaN₃) for several months, and at -20°C for longer periods. For optimal storage, aliquot antibody into smaller quantities after centrifugation and store at recommended temperature. For optimal performance, avoid repeated handling and multiple freeze/thaw cycles.

Scientific Background

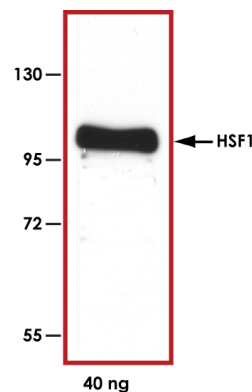
HSF1 is a member of the heat shock transcription factor family. Protein-damaging stress lead to the activation of HSF1 which binds to upstream regulatory sequences in the promoters of heat shock genes leading to enhanced heat shock gene expression (1). The activation of HSF1 proceeds through a multi-step pathway, involving a monomer-to-trimer transition, nuclear accumulation and extensive posttranslational modifications. HSF1 activity is regulated at different levels by heat shock proteins and co-chaperones and is modulated further by a number of mechanisms involving other stress-regulated aspects of cell metabolism (2).

References

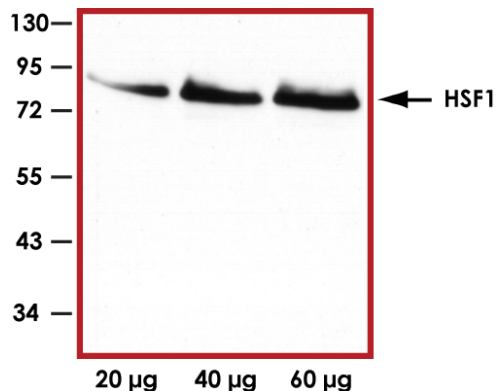
1. Pirkkala, L. et al: Roles of the heat shock transcription factors in regulation of the heat shock response and beyond. *FASEB J.* 2001 May; 15 (7):1118-31.
2. Voellmy, R.: Feedback regulation of the heat shock response. *Handb Exp Pharmacol.* 2006 ; (172):43-68.

To place your order, please contact us by phone 1-(604)-232-4600, fax 1-604-232-4601 or by email: orders@signalchem.com
www.signalchem.com

Sample Data



Representative Western blot with Anti-HSF1 (1:500) using 40 ng of GST-tagged human recombinant HSF1.



Representative Western blot with Anti-HSF1 (1:1000) using 20 µg, 40 µg and 60 µg of 293 cell lysate.

Anti-HSF1

Rabbit Polyclonal Antibody

Catalog Number

H25-63R

Specific Lot Number

M132-8

Purification

Affinity chromatography

Concentration

1.0 µg/µL

Stability

1yr at -20°C from date of shipment

Storage & Shipping

Store product at -20°C. For optimal storage, aliquot antibody into smaller quantities after centrifugation and store at recommended temperature. For optimal performance, avoid repeated handling and multiple freeze/thaw cycles. Product shipped on ice packs.