

## Anti-Rel A

Rabbit Polyclonal Antibody

**Catalog # R29-63R**

Lot # M105-5

### Cited Applications

- Western blot (1:1000)

*Ideal working dilutions for each application should be empirically determined by the investigator.*

### Specificity

Recognizes the Rel A protein

### Cross Reactivity

- Western blot of human and mouse Rel A

*Rel A from other species may also be detectable*

### Host

Rabbit

### Immunogen

Synthetic peptide corresponding to amino acids 274-278 of human Rel A

### Formulation

PBS pH 7.4, 0.02% sodium azide, 50% glycerol

### Stability

Store at 4°C (add 0.1% NaN<sub>3</sub>) for several months, and at -20°C for longer periods. For optimal storage, aliquot antibody into smaller quantities after centrifugation and store at recommended temperature. For optimal performance, avoid repeated handling and multiple freeze/thaw cycles.

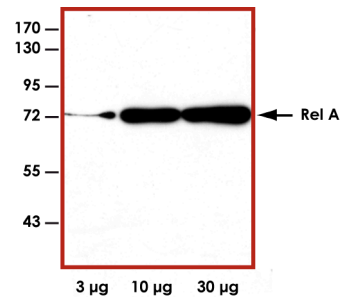
### Scientific Background

Transcription factors of the nuclear factor  $\kappa$ B (NF- $\kappa$ B)/Rel family play a pivotal role in inflammatory and immune responses. In unstimulated cells, NF- $\kappa$ B is sequestered in the cytoplasm by its inhibitory proteins, the I $\kappa$ Bs (1). NF- $\kappa$ B-activating agents can induce the phosphorylation of I $\kappa$ B's, targeting them for rapid degradation through an ubiquitin-proteasome pathway, releasing NF- $\kappa$ B to enter the nucleus, where it regulates gene expression.

### References

1. Baeuerle, P. et al: Function and activation of NF-kappa B in the immune system. *Annu Rev Immunol.* 1994;12:141-79.

### Sample Data



Representative western blot with the Anti-Rel A (1:1000) using 3 µg, 10 µg and 30 µg of HeLa cell lysate. The antibody also tested positive using 3T6 cell lysates (data not shown).

## Anti-Rel A

Rabbit Polyclonal Antibody

Catalog Number

R29-63R

Specific Lot Number

M105-5

Purification

Affinity chromatography

Concentration

1.0 µg/µL

Stability

1 yr At -20°C from date of shipment

Storage & Shipping

Store product at -20°C. For optimal storage, aliquot antibody into smaller quantities after centrifugation and store at recommended temperature. For optimal performance, avoid repeated handling and multiple freeze/thaw cycles. Product shipped on ice packs.

To place your order, please contact us by phone 1-(604)-232-4600, fax 1-604-232-4601 or by email: [orders@signalchem.com](mailto:orders@signalchem.com)

[www.signalchem.com](http://www.signalchem.com)

**FOR IN VITRO RESEARCH PURPOSES ONLY. NOT INTENDED FOR USE IN HUMAN OR ANIMALS.**