

Anti-MEK2

Rabbit Polyclonal Antibody

Catalog # M03-63R

Lot # M105-4

Cited Applications

- Western blot (1:1000)

Ideal working dilutions for each application should be empirically determined by the investigator.

Specificity

Recognizes the MEK2 protein

Cross Reactivity

- Western blot of human and mouse MEK2

MEK2 from other species may also be detectable

Host

Rabbit

Immunogen

Synthetic peptide corresponding to amino acids 392-396 of human MEK2

Formulation

PBS pH 7.4, 0.02% sodium azide, 50% glycerol

Stability

Store at 4°C (add 0.1% NaN₃) for several months, and at -20°C for longer periods. For optimal storage, aliquot antibody into smaller quantities after centrifugation and store at recommended temperature. For optimal performance, avoid repeated handling and multiple freeze/thaw cycles.

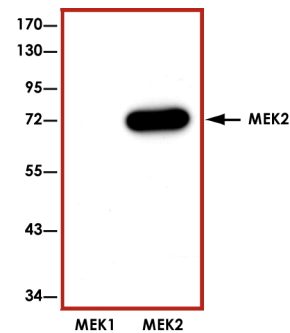
Scientific Background

MEK2 is the member of MAPK kinase (MAPKK) family of signaling protein kinases. MEK2 is a dual-specificity kinase that activates the extracellular signal-regulated kinase (ERK) and mitogen-activated protein (MAP) kinase upon agonist binding to receptors. MEK2 plays a key role in the Ras/Raf/MEK/ERK mitogen-activated protein kinase (MAPK) signaling pathways (1). Approximately 30% of all human cancers have a constitutively activated MAPK pathway, and constitutive activation of MEK2 results in cellular transformation. The ERK/MAP kinase cascade regulates cell growth and differentiation (2).

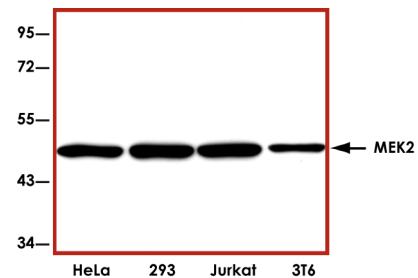
References

1. Shuichan, Xu et al: Differential Regulation of Mitogen-Activated Protein/ERK Kinase (MEK)1 and MEK2 and Activation by a Ras-Independent Mechanism. *Mol. Endocrinol.* 1997;11 (11): 1618-1625.
2. Louis-François, B, et al: Mek2 Is Dispensable for Mouse Growth and Development. *Mol. Cellular Biol.* 2003; 23 (14): 4778-4787.

Sample Data



Representative western blot with Anti-MEK2 (1:1000) using 20 ng of GST-tagged human recombinant MEK1 and MEK2.



Representative western blot with Anti-MEK2 (1:1000) using 30 µg of HeLa, HEK-293T, Jurkat, and 3T6 cell lysate.

Anti-MEK2

Rabbit Polyclonal Antibody

Catalog Number

M03-36R

Specific Lot Number

M105-4

Purification

Affinity chromatography

Concentration

1.0 µg/µL

Stability

1yr At -20°C from date of shipment

Storage & Shipping

Store product at -20°C. For optimal storage, aliquot antibody into smaller quantities after centrifugation and store at recommended temperature. For optimal performance, avoid repeated handling and multiple freeze/thaw cycles. Product shipped on ice packs.

To place your order, please contact us by phone 1-(604)-232-4600, fax 1-604-232-4601 or by email: orders@signalchem.com
www.signalchem.com

FOR IN VITRO RESEARCH PURPOSES ONLY. NOT INTENDED FOR USE IN HUMAN OR ANIMALS.