

GAB1 Protein

Full-length recombinant protein expressed in Sf9 cells

Catalog # G03-30H

Lot # M058-2

Product Description

Recombinant full-length human GAB1 was expressed by baculovirus in Sf9 insect cells using an N-terminal His tag. The gene accession number is [NM_207123](#).

Gene Aliases

None

Formulation

Recombinant protein stored in 50mM sodium phosphate, pH 7.0, 300mM NaCl, 150mM imidazole, 0.1mM PMSF, 0.25mM DTT, 25% glycerol.

Storage and Stability

Store product at -70°C . For optimal storage, aliquot target into smaller quantities after centrifugation and store at recommended temperature. For most favorable performance, avoid repeated handling and multiple freeze/thaw cycles.

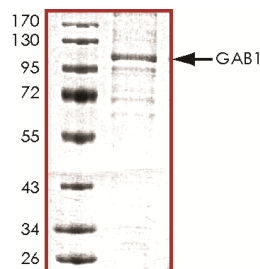
Scientific Background

GAB1 is a member of the IRS1-like multisubstrate docking protein family and is a direct substrate of the epidermal growth factor receptor and the insulin receptor (1). GAB1 is tyrosine phosphorylated upon stimulation of cells with various cytokines, growth factors, and antigen receptor. Tyrosine phosphorylation of GAB1 mediates interaction with several proteins that contain SH2 domains such as SHP2 and phosphatidylinositol 3-kinase. GAB1 is an important mediator of branching tubulogenesis and plays a central role in cellular growth response, transformation and apoptosis (2).

References

- Holgado-Madruga M, et al: A Grb2-associated docking protein in EGF- and insulin-receptor signalling. *Nature* 379: 560-564, 1996.
- Kiyatkin A, et al: Scaffolding protein Grb2-associated binder 1 sustains epidermal growth factor-induced mitogenic and survival signaling by multiple positive feedback loops. *J Biol Chem.* 2006 Jul 21;281(29):19925-38.

Purity



The purity of GAB1 was determined to be **>75%** by densitometry. Approx. MW **108kDa**.

GAB1 Protein

Full-length recombinant protein expressed in Sf9 cells

Catalog Number	G03-30H
Specific Lot Number	M058-2
Purity	>75%
Concentration	0.2 µg/µl
Stability	1yr at -70°C from date of shipment
Storage & Shipping	Store product at -70°C . For optimal storage, aliquot target into smaller quantities after centrifugation and store at recommended temperature. For most favorable performance, avoid repeated handling and multiple freeze/thaw cycles. Product shipped on dry ice.

To place your order, please contact us by phone 1-(604)-232-4600, fax 1-604-232-4601 or by email: orders@signalchem.com
www.signalchem.com

FOR IN VITRO RESEARCH PURPOSES ONLY. NOT INTENDED FOR USE IN HUMAN OR ANIMALS.