

## CDK11A (CDC2L2)/CyclinD3 Protein

Recombinant human protein expressed in Sf9 cells

**Catalog # C24-35CG**

Lot # L2062-7

### Product Description

Recombinant human CDK11A (361-end) and full-length CyclinD3 were co-expressed by baculovirus in Sf9 insect cells using an N-terminal GST tag. The gene accession numbers for CDK11A (CDC2L2) and Cyclin D3 are [NM\\_024011](#) and [NM\\_001760](#), respectively.

### Gene Aliases

CDK11A: CDC2L2; CDC2L3; CDK11-p110; CDK11-p46;  
CDK11-p58; p58GTA; PITSLRE

CyclinD3: CCND3

### Formulation

Recombinant protein stored in 50mM Tris-HCl, pH 7.5, 50mM NaCl, 10mM glutathione, 0.1mM EDTA, 0.25mM DTT, 0.1mM PMSF, 25% glycerol.

### Storage and Stability

Store product at -70°C. For optimal storage, aliquot target into smaller quantities after centrifugation and store at recommended temperature. For most favorable performance, avoid repeated handling and multiple freeze/thaw cycles.

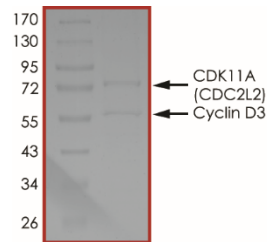
### Scientific Background

CDK11A or cyclin-dependent kinase 11A is a member of the p34Cdc2 protein kinase family. CDKs are known to be essential for eukaryotic cell cycle control. CDK11A gene complex may harbor one or more tumor suppressor genes affected by chromosome 1p36 modifications in neuroblastoma (1). CDK11A is associated with the alpha and beta isoforms of cyclin L1 and L2 in a high molecular mass complex that shows splicing activity (2). CDK11A can be cleaved by caspases and this is demonstrated to play a role in cell apoptosis.

### References

- Lahti, J. M. et.al: Alterations in the PITSLRE protein kinase gene complex on chromosome 1p36 in childhood neuroblastoma. *Nature Genet.* 7: 370-375, 1994.
- Loyer, P. et.al: Characterization of cyclin L1 and L2 interactions with CDK11 and splicing factors: influence of cyclin L isoforms on splice site selection. *J. Biol. Chem.* 283: 7721-7732, 2008.

### Purity



The purity of CDK11A/CyclinD3 was determined to be **>80%** by densitometry, CDK11A approx. MW **73kDa**, and Cyclin D3 approx. MW **58kDa**.

## CDK11A (CDC2L2)/CyclinD3 Protein

Recombinant human protein expressed in Sf9 cells

Catalog #	<b>C24-35CG</b>
Lot #	<b>L2062-7</b>
Purity	<b>&gt;80%</b>
Concentration	0.1 µg/µl
Stability	1 yr at -70°C from date of shipment
Storage & Shipping	Store product at -70°C. For optimal storage, aliquot target into smaller quantities after centrifugation and store at recommended temperature. For most favorable performance, avoid repeated handling and multiple freeze/thaw cycles. Product shipped on dry ice.

To place your order, please contact us by phone 1-(604)-232-4600, fax 1-604-232-4601 or by email: [orders@signalchem.com](mailto:orders@signalchem.com)  
[www.signalchem.com](http://www.signalchem.com)

**FOR IN VITRO RESEARCH PURPOSES ONLY. NOT INTENDED FOR USE IN HUMAN OR ANIMALS.**