

CyclinC Protein

Full length recombinant protein expressed in Sf9 cells

Catalog # C80-30G

Lot # L2027-15

Product Description

Recombinant full-length human CyclinC was expressed by baculovirus in Sf9 insect cells using an N-terminal GST tag. The gene accession number is [NM_005190](#).

Gene Aliases

CCNC, CycC

Formulation

Recombinant protein stored in 50mM Tris-HCl, pH 7.5, 50mM NaCl, 10mM glutathione, 0.1mM EDTA, 0.25mM DTT, 0.1mM PMSF, 25% glycerol.

Storage and Stability

Store product at -70°C . For optimal storage, aliquot target into smaller quantities after centrifugation and store at recommended temperature. For most favorable performance, avoid repeated handling and multiple freeze/thaw cycles.

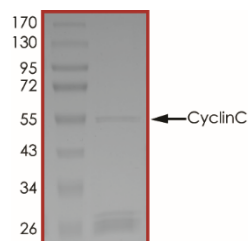
Scientific Background

Cyclin C is a member of the cyclin family of proteins and interacts with the cyclin-dependent kinase 8 (CDK8) and induces the phosphorylation of the carboxy-terminal domain of the large subunit of RNA polymerase II. The mRNA levels of Cyclin C fluctuate during the cell cycle and peak at the G1 phase. Cyclin C acts as a critical regulator of the G0/G1 transition of human Hematopoietic stem cells (1). Cyclin C can also combine with CDK3 to stimulate Rb phosphorylation at S807/811 during the G0/G1 transition, and this phosphorylation is required for cells to exit G0 efficiently (2).

References

1. Miyata, Y. et al: Cyclin C regulates human hematopoietic stem/progenitor cell quiescence. *Stem Cells*. 2010 Feb; 28(2): 308-17.
2. Ren, S. et al: Cyclin C/cdk3 promotes Rb-dependent G0 exit. *Cell*. 2004 Apr 16;117(2):239-51.

Purity



The purity of CyclinC was determined to be **>70%** by densitometry. Approx. MW **55 kDa**.

CyclinC Protein

Full length recombinant protein expressed in Sf9 cells

Catalog #	C80-30G
Lot #	L2027-15
Purity	>70%
Concentration	0.05 µg/µl
Stability	1yr at -70°C from date of shipment
Storage & Shipping	Store product at -70°C . For optimal storage, aliquot target into smaller quantities after centrifugation and store at recommended temperature. For most favorable performance, avoid repeated handling and multiple freeze/thaw cycles. Product shipped on dry ice.

To place your order, please contact us by phone 1-(604)-232-4600, fax 1-604-232-4601 or by email: orders@signalchem.com
www.signalchem.com

FOR IN VITRO RESEARCH PURPOSES ONLY. NOT INTENDED FOR USE IN HUMAN OR ANIMALS.