

## CyclinE2 Protein

Full length recombinant protein expressed in Sf9 cells

**Catalog # C82-30BG**

Lot # L1980-4

### Product Description

Recombinant full-length human CyclinE2 was expressed by baculovirus in Sf9 insect cells using an N-terminal GST tag. The gene accession number is [NM\\_057749](#).

### Gene Aliases

CCNE2; CYCE2

### Formulation

Recombinant protein stored in 50mM Tris-HCl, pH 7.5, 150mM NaCl, 10mM glutathione, 0.1mM EDTA, 0.25mM DTT, 0.1mM PMSF, 25% glycerol.

### Storage and Stability

Store product at  $-70^{\circ}\text{C}$ . For optimal storage, aliquot target into smaller quantities after centrifugation and store at recommended temperature. For most favorable performance, avoid repeated handling and multiple freeze/thaw cycles.

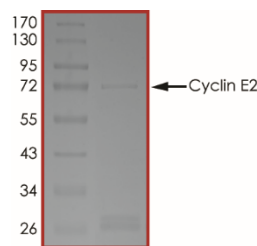
### Scientific Background

CCNE2 is belongs to the cyclin family, Cyclin E subfamily. It is encoded by a separate gene from Cyclin E1, but shows substantial amino acid sequence similarity. Like Cyclin E1, it binds and activates the cyclin-dependent kinase 2 (Cdk2), which in turn phosphorylates proteins involved in cell cycle progression such as pRB, p107, NPM1, MCMs, thereby driving cell proliferation. A defect in spermatogenesis is the only phenotype observed in cyclin E2-deficient mice, suggesting its role in male fertility.

### References

- Geng Y, et al. (2003) Cyclin E ablation in the mouse. *Cell* 114: 431–443.
- Hwang HC, et al. (2005) Cyclin E in normal and neoplastic cell cycles. *Oncogene* 24: 2776–2786.
- Odajima J, et al. (2016). Proteomic Landscape of Tissue-Specific Cyclin E Functions in Vivo. *PLoS Genet.* 12(11):e1006429.

### Purity



The purity of CyclinE2 was determined to be **>70%** by densitometry. Approx. MW **72kDa**.

## CyclinE2 Protein

Full length recombinant protein expressed in Sf9 cells

Catalog #	C82-30BG
Lot #	L1980-4
Purity	>70%
Concentration	0.05 µg/µl
Stability	1 yr at $-70^{\circ}\text{C}$ from date of shipment
Storage & Shipping	Store product at $-70^{\circ}\text{C}$ . For optimal storage, aliquot target into smaller quantities after centrifugation and store at recommended temperature. For most favorable performance, avoid repeated handling and multiple freeze/thaw cycles. Product shipped on dry ice.

To place your order, please contact us by phone 1-(604)-232-4600, fax 1-604-232-4601 or by email: [orders@signalchem.com](mailto:orders@signalchem.com)  
[www.signalchem.com](http://www.signalchem.com)

**FOR IN VITRO RESEARCH PURPOSES ONLY. NOT INTENDED FOR USE IN HUMAN OR ANIMALS.**