

Moesin Protein

Human recombinant protein expressed in E. coli cells

Catalog # M52-55G

Lot # L157-3

Product Description

Recombinant human Moesin (410-end) was expressed in E. coli cells using an N-terminal GST tag. The gene accession number is [NM_002444](#).

Gene Aliases

MSN

Formulation

Recombinant protein stored in 50mM Tris-HCl, pH 7.5, 150mM NaCl, 10mM glutathione, 0.1mM EDTA, 0.25mM DTT, 0.1mM PMSF, 25% glycerol.

Storage and Stability

Store product at -70°C. For optimal storage, aliquot target into smaller quantities after centrifugation and store at recommended temperature. For most favorable performance, avoid repeated handling and multiple freeze/thaw cycles.

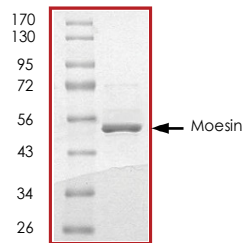
Scientific Background

Moesin (or membrane-organizing extension spike protein) belongs to ERM family that modulates epithelial integrity by regulating cell-signalling events that affect actin organization and polarity (1). The effects of Moesin on epithelial cells appear to result from inhibition of Rho signaling. ERM proteins serve a structural role in linkage of the cytoskeleton to the plasma membrane and the rescue of cells lacking Moesin by modulation of Rho signaling indicates that inhibition of Rho activity may be a more critical function of Moesin. The negative feedback loop produced by Rho's activation of ERM may be an important mechanism that prevents the excessive migratory and invasive properties characteristic of metastatic cancer cells (2).

References

1. Speck, O. et al: Moesin functions antagonistically to the Rho pathway to maintain epithelial integrity. *Nature*. 2003;421(6918):83-7.
2. Lankes, W.T. et al: Moesin: a member of the protein 4.1-talin-ezrin family of proteins *Proc. Natl. Acad. Sci. U S A*. 1991;88(19):8297-301.

Purity



The purity of Moesin was determined to be **>95%** by densitometry. Approx. MW **50kDa**.

Moesin Protein

Human recombinant protein expressed in E. coli cells

Catalog Number	M52-55G
Specific Lot Number	L157-3
Purity	>95%
Concentration	0.2 µg/µl
Stability	1 yr At -70°C from date of shipment
Storage & Shipping	Store product at -70°C. For optimal storage, aliquot target into smaller quantities after centrifugation and store at recommended temperature. For most favorable performance, avoid repeated handling and multiple freeze/thaw cycles. Product shipped on dry ice.

To place your order, please contact us by phone 1-(604)-232-4600, fax 1-604-232-4601 or by email: orders@signalchem.com
www.signalchem.com

FOR IN VITRO RESEARCH PURPOSES ONLY. NOT INTENDED FOR USE IN HUMAN OR ANIMALS.