

## Anti-p70S6K

Rabbit Polyclonal Antibody

**Catalog # R21-63R**

Lot # L020-2

### Cited Applications

- Western blot (1:1000)

*Ideal working dilutions for each application should be empirically determined by the investigator.*

### Specificity

Recognizes the p70S6K protein

### Cross Reactivity

- Western blot p70S6K from human, mouse, rabbit and rat cells

*p70S6K from other species may also be detectable*

### Host

Rabbit

### Immunogen

C-ISKRPEHLRMNL conjugated to KLH

### Formulation

PBS pH 7.2, 50% glycerol, 0.1% Tween-20

### Stability

Store at 4°C (add 0.1% NaN<sub>3</sub>) for several months, and at -20°C for longer periods. For optimal storage, aliquot target into smaller quantities after centrifugation and store at recommended temperature. For optimal performance, avoid repeated handling and multiple freeze/thaw cycles.

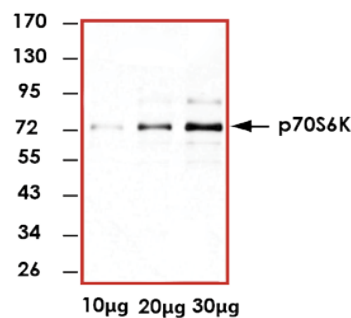
### Scientific Background

p70S6K is responsible for the phosphorylation of 40S ribosomal protein S6 and is ubiquitously expressed in human adult tissues (1). p70S6K is activated by serum stimulation and this activation is inhibited by wortmannin and rapamycin. p70S6K activity undergoes changes in the cell cycle and increases 20-fold in G1 cells released from G0 (2).

### References

1. Ferrari, S. et al: S6 phosphorylation and the p70s6k/p85s6k. Crit Rev Biochem Mol Biol. Review. 1994;29(6):385-413.
2. Edelmann, HM. Et al: Cell cycle regulation of p70 S6 kinase and p42/p44 mitogen-activated protein kinases in Swiss mouse 3T3 fibroblasts. J Biol Chem. 1996 Jan 12;271(2):963-71.

### Sample Data



Representative western blot with Anti-p70S6K (1:1000) using 10 µg, 20 µg, and 30 µg of HEK 293 cell lysate.

## Anti-p70S6K

Rabbit Polyclonal Antibody

Catalog Number

R21-63R

Specific Lot Number

L020-2

Purification

Affinity purified by the peptide antigen

Concentration

0.25 µg/µL

Stability

1yr At -20°C from date of shipment

Storage & Shipping

Store product at -20°C. For optimal storage, aliquot antibody into smaller quantities after centrifugation and store at recommended temperature. For optimal performance, avoid repeated handling and multiple freeze/thaw cycles. Product shipped on ice packs.

To place your order, please contact us by phone 1-(604)-232-4600, fax 1-604-232-4601 or by email: [orders@signalchem.com](mailto:orders@signalchem.com)  
[www.signalchem.com](http://www.signalchem.com)

**FOR IN VITRO RESEARCH PURPOSES ONLY. NOT INTENDED FOR USE IN HUMAN OR ANIMALS.**