

Anti-RSK1

Rabbit Polyclonal Antibody

Catalog # R15-63R

Lot # L020-1

Cited Applications

- Western blot (1:2000)

Ideal working dilutions for each application should be empirically determined by the investigator.

Specificity

Recognizes the RSK1 protein

Cross Reactivity

- Western blot RSK1 from human, mouse, and rat cells

RSK1 from other species may also be detectable

Host

Rabbit

Immunogen

C-LAQRVRKLPSTTL conjugated to KLH

Formulation

TBS pH 7.2, 50% glycerol

Stability

Store at 4°C (add 0.1% NaN₃) for several months, and at -20°C for longer periods. For optimal storage, aliquot antibody into smaller quantities after centrifugation and store at recommended temperature. For optimal performance, avoid repeated handling and multiple freeze/thaw cycles.

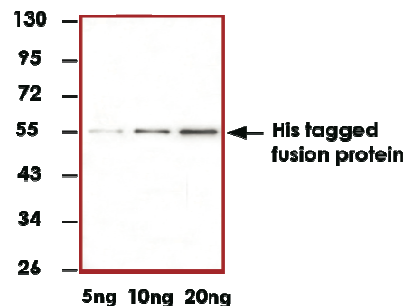
Scientific Background

RSK1 is a member of the RSK (ribosomal S6 kinase) family that are growth factor-regulated serine/threonine kinases. RSK1 contains 2 nonidentical kinase catalytic domains and phosphorylates various substrates, including members of the mitogen-activated kinase (MAPK) signaling pathway. RSK1 transcript is present in lymphocytes, skeletal muscle, liver, and adipose tissue (1). RSKs are implicated in the activation of the mitogen-activated kinase (MAPK) cascade and the stimulation of cell proliferation and differentiation (2).

References

1. Moller, D E. et al: Human rsk isoforms: cloning and characterization of tissue-specific expression. Am. J. Physiol. 266: C351-C359, 1994.
2. Gross, S D. et al: Induction of metaphase arrest in cleaving Xenopus embryos by the protein kinase p90(Rsk). Science 286: 1365-1367, 1999.

Sample Data



Representative western blot with Anti-His (1:1000) using 5 µg, 10 µg, 20 µg of HEK 293 cell lysate transfected with a 52 kDa His tagged fusion protein.

Anti-RSK1

Rabbit Polyclonal Antibody

Catalog Number	R15-63R
Specific Lot Number	L020-1
Purification	Affinity purified by the peptide antigen
Concentration	0.25 µg/µL
Stability	1yr at -20°C from date of shipment
Storage & Shipping	Store product at -20°C. For optimal storage, aliquot antibody into smaller quantities after centrifugation and store at recommended temperature. For optimal performance, avoid repeated handling and multiple freeze/thaw cycles. Product shipped on ice packs.

To place your order, please contact us by phone 1-(604)-232-4600, fax 1-604-232-4601 or by email: orders@signalchem.com
www.signalchem.com

FOR IN VITRO RESEARCH PURPOSES ONLY. NOT INTENDED FOR USE IN HUMAN OR ANIMALS.