

## AKT3, Unactive

Full-length recombinant protein expressed in Sf9 cells

Catalog # **A18-14G**

Lot # *K185-3*

### Product Description

Recombinant full-length human AKT3 was expressed by baculovirus in Sf9 cells using an N-terminal GST tag. The gene accession number is [NM\\_005465](#).

### Gene Aliases

PKBG; PRKBG; STK-2; RAC-gamma; RAC-PK-gamma

### Formulation

Recombinant protein stored in 50mM Tris-HCl, pH 7.5, 150mM NaCl, 0.25mM DTT, 0.1mM EGTA, 0.1mM EDTA, 0.1mM PMSF, 25% glycerol.

### Storage and Stability

Store product at  $-70^{\circ}\text{C}$ . For optimal storage, aliquot target into smaller quantities after centrifugation and store at recommended temperature. For most favorable performance, avoid repeated handling and multiple freeze/thaw cycles.

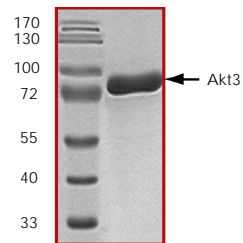
### Scientific Background

AKT3 or Protein Kinase B  $\gamma$  (PKB $\gamma$ ) is a serine/threonine kinase that is a member of the AKT family. AKT3 is activated in cells exposed to diverse stimuli such as hormones, growth factors, and extracellular matrix components (1). AKT3 phosphorylates and regulates the function of many cellular proteins involved in processes that include cellular metabolism, survival/apoptosis, and proliferation. Recent evidence indicates that AKT3 is frequently overexpressed in many types of human cancers including breast and prostate (2).

### References

1. Coffey, P.J. et al: Protein kinase B (c-Akt): a multifunctional mediator of phosphatidylinositol 3-kinase activation. *Biochem J.* 1998 Oct 1; 335 (Pt 1): 1-13.
2. Anderson, K.E. et al: Translocation of PDK-1 to the plasma membrane is important in allowing PDK-1 to activate protein kinase B. *Curr Biol.* 1998 Jun 4;8(12): 684-91.

### Purity



The purity was determined to be **>90%** by densitometry.  
Approx. MW **84kDa**.

### Upstream Active Kinase

Active PDK1

Cat # P14-10

## AKT3, Unactive

Full-length recombinant protein expressed in Sf9 cells

Catalog Number **A18-14G**

Specific Lot Number **K185-3**

Purity **>90%**

Concentration **0.2  $\mu\text{g}/\mu\text{l}$**

Stability **1yr At  $-70^{\circ}\text{C}$  from date of shipment**

Storage & Shipping **Store product at  $-70^{\circ}\text{C}$ . For optimal storage, aliquot target into smaller quantities after centrifugation and store at recommended temperature. For most favorable performance, avoid repeated handling and multiple freeze/thaw cycles. Product shipped on dry ice.**

To place your order, please contact us by phone 1-(604)-232-4600, fax 1-604-232-4601 or by email: [orders@signalchem.com](mailto:orders@signalchem.com)  
[www.signalchem.com](http://www.signalchem.com)

**FOR IN VITRO RESEARCH PURPOSES ONLY. NOT INTENDED FOR USE IN HUMAN OR ANIMALS.**