

PAK1, Unactive

Full-length recombinant protein expressed in Sf9 cells

Catalog # P02-14G

Lot # K185-2

Product Description

Recombinant full-length human PAK1 was expressed by baculovirus in Sf9 insect cells using an N-terminal GST tag. The gene accession number is [BC050377](#). Cannot be activated by CDC42.

Gene Aliases

PAKalpha; MGC130000; MGC130001

Formulation

Recombinant protein stored in 50mM Tris-HCl, pH 7.5, 150mM NaCl, 0.25mM DTT, 0.1mM EGTA, 0.1mM EDTA, 0.1mM PMSF, 25% glycerol.

Storage and Stability

Store product at -70°C . For optimal storage, aliquot target into smaller quantities after centrifugation and store at recommended temperature. For most favorable performance, avoid repeated handling and multiple freeze/thaw cycles.

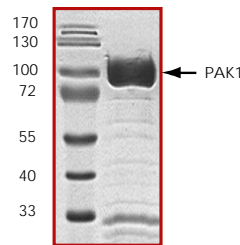
Scientific Background

PAK1 is a member of the p21-activated kinases (PAKs) which have been implicated in the regulation of cell morphology, motility and transformation. These serine/threonine kinases are activated by and are effectors of small GTPases, cdc 42 and Rac. PAK1 belongs to the Group I PAKs which also includes PAK2 and PAK3 (1). PAK1 is a key regulator of the actin cytoskeleton, adhesion and cell motility. Inactive dimeric PAK1 is mainly cytosolic and interaction with the activators Cdc42-GTP and Rac1-GTP stimulates the kinase at the sites of cellular protrusions forming adhesions to the extracellular matrix (2).

References

1. Jaffer, Z M. et al: p21-activated kinases: three more join the Pak. *Int J Biochem Cell Biol.* 2002 Jul;34(7):713-7.
2. Parrini, M C. et al: Spatiotemporal regulation of the Pak1 kinase. *Biochem Soc Trans.* 2005 Aug;33(Pt 4):646-8.

Purity



The purity was determined to be **>90%** by densitometry.
Approx. MW **88kDa**.

PAK1, Unactive

Full-length recombinant protein expressed in Sf9 cells

Catalog Number P02-14G

Specific Lot Number K185-2

Purity	>90%
Concentration	0.2 $\mu\text{g}/\mu\text{l}$
Stability	1yr At -70°C from date of shipment
Storage & Shipping	Store product at -70°C . For optimal storage, aliquot target into smaller quantities after centrifugation and store at recommended temperature. For most favorable performance, avoid repeated handling and multiple freeze/thaw cycles. Product shipped on dry ice.

To place your order, please contact us by phone 1-(604)-232-4600, fax 1-604-232-4601 or by email: orders@signalchem.com
www.signalchem.com

FOR IN VITRO RESEARCH PURPOSES ONLY. NOT INTENDED FOR USE IN HUMAN OR ANIMALS.