

ERK2, Unactive

Full-length recombinant protein expressed in E. coli cells

Catalog # M28-14U

Lot # K173-2

Product Description

Recombinant full-length tag-free human ERK2 was expressed in E. coli cells. The gene accession number is [NM_002745](#).

Gene Aliases

MAPK1, MAPK2, P42MAPK, PRKM1, PRKM2, p41mapk, ERK, ERT1

Formulation

Recombinant protein stored in 50mM Tris-HCl, pH 7.5, 150mM NaCl, 0.25mM DTT, 0.1mM EGTA, 0.1mM EDTA, 0.1mM PMSF, 25% glycerol.

Storage and Stability

Store product at -70°C . For optimal storage, aliquot target into smaller quantities after centrifugation and store at recommended temperature. For most favorable performance, avoid repeated handling and multiple freeze/thaw cycles.

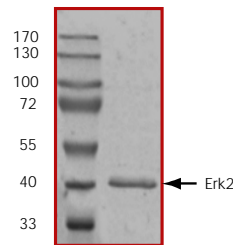
Scientific Background

ERK2 is a protein serine/threonine kinase that is a member of the extracellular signal-regulated kinases (ERKs) which are activated in response to numerous growth factors and cytokines (1). Activation of ERK2 requires both tyrosine and threonine phosphorylation that is mediated by MEK. ERK2 is ubiquitously distributed in tissues with the highest expression in heart, brain and spinal cord. Activated ERK2 translocates into the nucleus where it phosphorylates various transcription factors (e.g., Elk-1, c-Myc, c-Jun, c-Fos, and C/EBP beta).

References

1. Boulton, TG. et al: Purification and properties of extracellular signal-regulated kinase 1, an insulin-stimulated microtubule-associated protein 2 kinase. *Biochemistry*. 1991 Jan 8;30(1):278-86.

Purity



The purity was determined to be **>90%** by densitometry.
Approx. MW **42kDa**.

ERK2, Unactive

Full-length recombinant protein expressed in E. coli cells

Catalog Number M28-14U

Specific Lot Number K173-2

Purity >90%

Concentration 0.2 $\mu\text{g}/\mu\text{l}$

Stability 1yr At -70°C from date of shipment

Storage & Shipping

Store product at -70°C . For optimal storage, aliquot target into smaller quantities after centrifugation and store at recommended temperature. For most favorable performance, avoid repeated handling and multiple freeze/thaw cycles. Product shipped on dry ice.

To place your order, please contact us by phone 1-(604)-232-4600, fax 1-604-232-4601 or by email: orders@signalchem.com
www.signalchem.com

FOR IN VITRO RESEARCH PURPOSES ONLY. NOT INTENDED FOR USE IN HUMAN OR ANIMALS.