

UBE2R2 (UBC3B) Protein

Recombinant protein expressed in E.coli cells

Catalog # U235-30H

Lot # J617-4

Product Description

Recombinant human UBE2R2 (UBC3B) (2-end) was expressed in E. coli cells using an N-terminal His tag. The gene accession number is [NM_017811](#).

Gene Aliases

CDC34B; E2-CDC34B; UBC3B

Formulation

Recombinant protein stored in 50mM sodium phosphate, pH 7.0, 300mM NaCl, 150mM imidazole, 0.1mM PMSF, 0.25mM DTT, 25% glycerol.

Storage and Stability

Store product at -70°C . For optimal storage, aliquot target into smaller quantities after centrifugation and store at recommended temperature. For most favorable performance, avoid repeated handling and multiple freeze/thaw cycles.

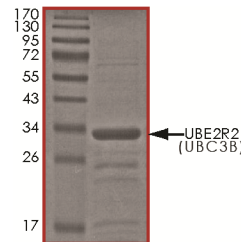
Scientific Background

UBE2R2 (UBC3B) or ubiquitin-conjugating enzyme E2R 2 encodes a protein similar to the E2 ubiquitin conjugating enzyme UBC3/CDC34. CK2-dependent phosphorylation of this ubiquitin-conjugating enzyme functions by regulating beta-TrCP substrate recognition and induces its interaction with beta-TrCP thereby enhancing beta-catenin degradation. CK2-dependent phosphorylation of CDC34 and UBC3B functions by regulating BTRC substrate recognition (1). UBE2R2 complements a yeast *cdc34* temperature-sensitive mutant. Deletion and site-directed mutagenesis demonstrated that CK2 phosphorylated UBE2R2 in the C-terminal domain at serine-233; mutagenesis of the corresponding serine residue at position 231 of human CDC34/UBC3 showed that this was the major CK2-phosphorylation site in this protein.

References

1. Semplici, F. et.al: CK2-dependent phosphorylation of the E2 ubiquitin conjugating enzyme UBC3B induces its interaction with beta-TrCP and enhances beta-catenin degradation. *Oncogene* 21: 3978-3987, 2002.

Purity



The purity of UBE2R2 (UBC3B) was determined to be **>90%** by densitometry. Approx. MW **32 kDa**.

UBE2R2 (UBC3B) Protein

Recombinant protein expressed in E. coli cells

Catalog Number	U235-30H
Specific Lot Number	J617-4
Purity	>90%
Concentration	0.1 µg/µl
Stability	1yr at -70°C from date of shipment
Storage & Shipping	Store product at -70°C . For optimal storage, aliquot target into smaller quantities after centrifugation and store at recommended temperature. For most favorable performance, avoid repeated handling and multiple freeze/thaw cycles. Product shipped on dry ice.

To place your order, please contact us by phone 1-(604)-232-4600, fax 1-604-232-4601 or by email: orders@signalchem.com
www.signalchem.com

FOR IN VITRO RESEARCH PURPOSES ONLY. NOT INTENDED FOR USE IN HUMAN OR ANIMALS.