

UBE2R1 Protein

Full length recombinant protein expressed in E.coli cells

Catalog # U234-30H

Lot # J593-3

Product Description

Recombinant full length human UBE2R1 was expressed in E. coli cells using an N-terminal His tag. The gene accession number is [NM_004359](#).

Gene Aliases

E2-CDC34; UBC3; UBCH3; CDC34

Formulation

Recombinant protein stored in 50mM sodium phosphate, pH 7.0, 300mM NaCl, 150mM imidazole, 0.1mM PMSF, 0.25mM DTT, 25% glycerol.

Storage and Stability

Store product at -70°C. For optimal storage, aliquot target into smaller quantities after centrifugation and store at recommended temperature. For most favorable performance, avoid repeated handling and multiple freeze/thaw cycles.

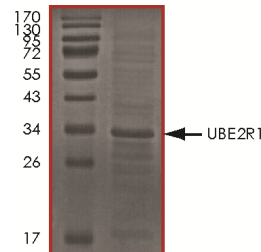
Scientific Background

UBE2R1 is a member of the ubiquitin-conjugating enzyme family which catalyzes the covalent attachment of ubiquitin to other proteins. UBE2R1 is a part of the large multiprotein complex which is required for ubiquitin-mediated degradation of cell cycle G1 regulators and for the initiation of DNA replication (1). CK2 can phosphorylate CDC34 and UBC3B at corresponding serine residue in the C terminus of each protein. Phosphorylated UBC3B and CDC34 binds specifically to the F-box protein beta-TRCP which results in enhanced degradation of beta-catenin, a substrate of BTRC. CK2-dependent phosphorylation of CDC34 and UBC3B functions by regulating BTRC substrate recognition (2).

References

1. Plon, S. E. et.al: Cloning of the human homolog of the CDC34 cell cycle gene by complementation in yeast. Proc. Nat. Acad. Sci. 90: 10484-10488, 1993.
2. Semplici, F. et.al: CK2-dependent phosphorylation of the E2 ubiquitin conjugating enzyme UBC3B induces its interaction with beta-TrCP and enhances beta-catenin degradation. Oncogene 21: 3978-3987, 2002.

Purity



The purity of UBE2R1 was determined to be **>75%** by densitometry. Approx. MW **33 kDa**.

UBE2R1 Protein

Full length recombinant protein expressed in E. coli cells

Catalog Number	U234-30H
Specific Lot Number	J593-3
Purity	>75%
Concentration	0.1µg/µl
Stability	1yr At -70°C from date of shipment
Storage & Shipping	Store product at -70°C. For optimal storage, aliquot target into smaller quantities after centrifugation and store at recommended temperature. For most favorable performance, avoid repeated handling and multiple freeze/thaw cycles. Product shipped on dry ice.

To place your order, please contact us by phone 1-(604)-232-4600, fax 1-604-232-4601 or by email: orders@signalchem.com
www.signalchem.com

FOR IN VITRO RESEARCH PURPOSES ONLY. NOT INTENDED FOR USE IN HUMAN OR ANIMALS.