

## Tau Protein Marker

Mixture of seven human Tau isoform proteins

### Catalog # T08-07N

Lot # J451-2

### Product Description

The seven full-length human tag-free Tau isoform proteins were expressed in *E. coli* cells. This mixture is ideally suited for SDS-PAGE and immunoblot application as Tau protein marker.

### Molecular Weight

Tau-441: approx 64,000 (45,900 by MW calculation)  
 Tau-410: approx 61,000 (42,600 by MW calculation)  
 Tau-412: approx 58,000 (42,900 by MW calculation)  
 Tau-381: approx 54,000 (39,700 by MW calculation)  
 Tau-383: approx 52,000 (40,000 by MW calculation)  
 Tau-352: approx 49,000 (36,800 by MW calculation)  
 Tau-316: approx 39,000 (32,900 by MW calculation)

### Applications

SDS-PAGE : 10ul for mini-gel application  
 Immunoblot: 1~2ul for mini-gel application

### Concentration

50ng/µl of each isoform protein

### Purity

>90% by densitometry on Coomassie blue stained SDS-PAGE.

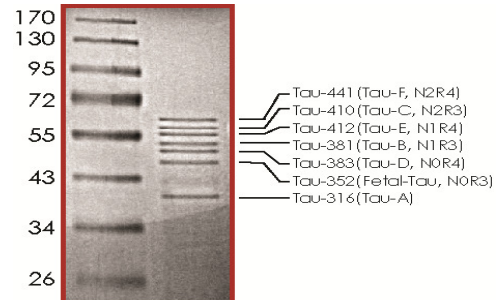
### Formulation

Proteins stored in 100mM Tris-HCl, pH 6.8, 2% SDS, 12% glycerol and 0.01% bromphenol blue.

### Storage and Stability

Store product at -20°C. For optimal storage, aliquot target into smaller quantities after centrifugation and store at recommended temperature. For most favorable performance, avoid repeated handling and multiple freeze/thaw cycles.

### Electrophoresis



SDS-PAGE image of Tau Protein Marker. The seven Tau isoform proteins from top to bottom are: Tau-441, Tau-410, Tau-412, Tau-381, Tau-383, Tau-352 and Tau-316.

## Tau Protein Marker

The mixture of seven human Tau isoform proteins

Catalog Number	T08-07N
Specific Lot Number	J451-2
Purity	>90%
Concentration	50 ng/µl of each isoform protein
Stability	1yr at -20°C from date of shipment
Storage & Shipping	Store product at -20°C. For optimal storage, aliquot target into smaller quantities after centrifugation and store at recommended temperature. For most favorable performance, avoid repeated handling and multiple freeze/thaw cycles. Product shipped on dry ice.

To place your order, please contact us by phone 1-(604)-232-4600, fax 1-604-232-4601 or by email: [orders@signalchem.com](mailto:orders@signalchem.com)  
[www.signalchem.com](http://www.signalchem.com)

**FOR IN VITRO RESEARCH PURPOSES ONLY. NOT INTENDED FOR USE IN HUMAN OR ANIMALS.**