

Anti-APBA1

Rabbit Polyclonal Antibody

Catalog # A86-363R

Lot # J1274-5

Cited Applications

WB

Suggested Dilutions:

WB 1:1,000

Ideal working dilutions for each application should be empirically determined by the investigator.

Specificity

Recognizes the APBA1 protein

Cross Reactivity

Human, Mouse, Canine, Chicken, non-Human Primate

Host/Isotype/Clone#

Rabbit, IgG

Immunogen

Synthetic peptide corresponding to amino acid residues from the C-terminal region conjugated to KLH

Formulation

100 µl in 10 mM HEPES (pH 7.5), 150 mM NaCl, 100 µg per ml BSA and 50% glycerol.

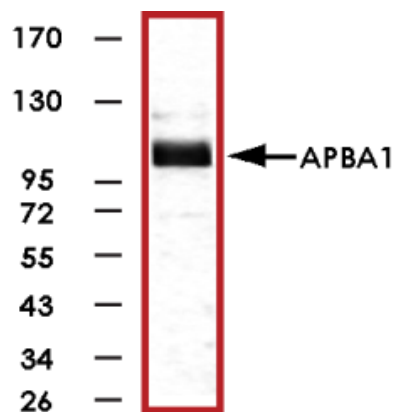
Scientific Background

APBA1 phosphorylates amyloid precursor protein (APP). There is strong evidence that implicates APP in the pathogenesis of Alzheimer's disease (AD) (1). The phosphorylation of APP at Thr668 might be critical for generating soluble APP (β) and beta-amyloid peptide (αβ) fragments, which are the major components of senile plaques that are found in patient brains inflicted with AD (2,3).

References

1. Liu, F. et al: Regulation of amyloid precursor protein (APP) phosphorylation and processing by p35/cdk5 and p25/cdk5. FEBS Lett 2003 547:193-196.
2. Ando, K. et al: Phosphorylation-dependent regulation of the interaction of amyloid precursor protein with Fe65 affects the production of beta-amyloid. J Biol Chem 2001 276:40353-40361.
3. Kamenetz, F. et al: APP processing and synaptic function. Neuron 2003 37:925-937, 2003.

Sample Data



Western blot of rat hippocampal lysate showing specific immunolabeling of the ~115kDa APBA1 protein.

Anti-APBA1

Rabbit Polyclonal Antibody

Catalog Number

A86-363R

Specific Lot Number

J1274-5

Purification
Stability
Storage & Shipping

Affinity chromatography
1yr at -20°C from date of shipment
Store product at -20°C. For optimal storage, aliquot antibody into smaller quantities after centrifugation and store at recommended temperature. For optimal performance, avoid repeated handling and multiple freeze/thaw cycles. Product shipped on ice packs.

To place your order, please contact us by phone 1-(604)-232-4600, fax 1-604-232-4601 or by email: orders@signalchem.com
www.signalchem.com

FOR IN VITRO RESEARCH PURPOSES ONLY. NOT INTENDED FOR USE IN HUMAN OR ANIMALS.