

Anti-RSK3

Rabbit Polyclonal Antibody

Catalog # R16-63R

Lot # J1274-34

Cited Applications

WB

Suggested Dilutions:
WB 1:1,000

Ideal working dilutions for each application should be empirically determined by the investigator.

Specificity

Recognizes the RAF1 protein phosphorylated at serine 301

Cross Reactivity

Human, Mouse, Rat, Bovine, Canine, non-Human Primates, Xenopus and Zebrafish

Host/Isotype/Clone#

Rabbit, IgG

Immunogen

Synthetic phospho-peptide corresponding to amino acid residues surrounding Ser301 conjugated to KLH

Formulation

100 µl in 10 mM HEPES (pH 7.5), 150 mM NaCl, 100 µg per ml BSA and 50% glycerol.

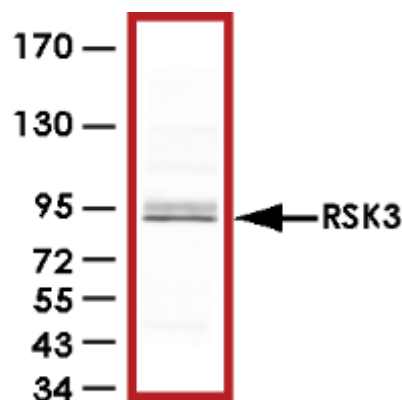
Scientific Background

The p90 ribosomal S6 kinases (RSK)1–4 are downstream members of the extracellular signal-regulated kinase (ERK)/MAPK cascade. RSK3 encodes a 733-amino-acid protein with a unique N-terminal region, which contains a putative nuclear localization signal (1). RSK3 mRNA is widely expressed and is activated by growth factors, serum and phorbol esters. Upon stimulation, RSK3 translocates to the cell nucleus and phosphorylates nuclear proteins. RSK3 can bind to ERK1/2 and this association increases the duration of RSK3 activation (2).

References

1. Zhao, Y. et al: RSK3 encodes a novel pp90rsk isoform with a unique N-terminal sequence: growth factor-stimulated kinase function and nuclear translocation. *Mol Cell Biol.* 1995 Aug;15(8):4353-63.
2. Roux, P. P. et al: Phosphorylation of p90 ribosomal S6 kinase (RSK) regulates extracellular signal-regulated kinase docking and RSK activity. *Mol Cell Biol.* 2003 Jul;23(14):4796-804.

Sample Data



Western blot of HeLa lysate showing specific immunolabeling of the ~90kDa RSK3 protein.

Anti-RSK3

Rabbit Polyclonal Antibody

Catalog Number

R16-63R

Specific Lot Number

J1274-34

Purification
Stability
Storage & Shipping

Affinity chromatography
1yr at -20°C from date of shipment
Store product at -20°C. For optimal storage, aliquot antibody into smaller quantities after centrifugation and store at recommended temperature. For optimal performance, avoid repeated handling and multiple freeze/thaw cycles. Product shipped on ice packs.

To place your order, please contact us by phone 1-(604)-232-4600, fax 1-604-232-4601 or by email: orders@signalchem.com
www.signalchem.com

FOR IN VITRO RESEARCH PURPOSES ONLY. NOT INTENDED FOR USE IN HUMAN OR ANIMALS.