

Anti-SNCA

Mouse Monoclonal Antibody

Catalog # S22-360M

Lot # J1274-3

Cited Applications

WB, IF

Suggested Dilutions:

WB 1:1,000, IF 1:500

Ideal working dilutions for each application should be empirically determined by the investigator.

Specificity

Recognizes the SNCA protein

Cross Reactivity

Human, Mouse and Rat

Host/Isotype/Clone#

Mouse, IgG1, 3H9

Immunogen

Full length human alpha synuclein expressed in E. Coli.

Formulation

Ascites fluid + 0.01 % NaN₃.

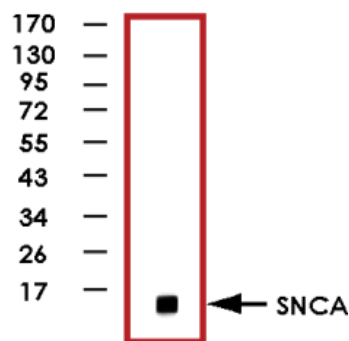
Scientific Background

Alpha-synuclein is expressed in the presynaptic terminal of the neuron where it is implicated in the formation of SNARE complexes. Aggregated alpha-synuclein is one of the major components found in the Lewy bodies, which are found in the brains of patients with Parkinson's disease (PD) and other neurodegenerative disorders (1). In fact, there is evidence to suggest that early onset Parkinson's disease may be caused by a duplication or triplication of one of the alpha synuclein genes (2). Alpha-synuclein is also found in the brains of patients with multiple system atrophy (MSA) and amyotrophic lateral sclerosis (ALS).

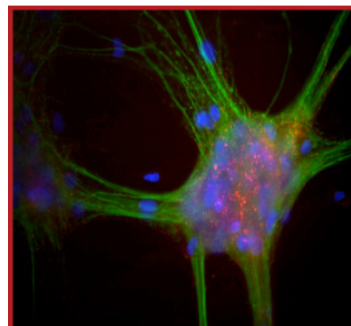
References

1. Okochi, M. et al: Constitutive phosphorylation of the Parkinson's disease associated alpha-synuclein. J Biol Chem 2000 Jan 7;275(1): 390-7.
2. Chartier-Harlin, M C. et al: Alpha-synuclein locus duplication as a cause of familial Parkinson's disease. Lancet 2004 364: 1167-1169.

Sample Data



Western blot of rat brain lysate showing specific immunolabeling of the ~ 15kDa SNCA protein.



Mixed neuron-glia cultures stained with Anti-SNCA (red) and chicken Anti-MAP2 (green). The Anti-SNCA antibody stains vesicular structures, the perikarya and processes of the neurons in this image.

Anti-SNCA

Mouse Monoclonal Antibody

Catalog Number

S22-360M

Specific Lot Number

J1274-3

Purification

Ascites Fluid

Stability

1yr at -20°C from date of shipment

Storage & Shipping

Store product at -20°C. For optimal storage, aliquot antibody into smaller quantities after centrifugation and store at recommended temperature. For optimal performance, avoid repeated handling and multiple freeze/thaw cycles. Product shipped on ice packs.

To place your order, please contact us by phone 1-(604)-232-4600, fax 1-604-232-4601 or by email: orders@signalchem.com
www.signalchem.com

FOR IN VITRO RESEARCH PURPOSES ONLY. NOT INTENDED FOR USE IN HUMAN OR ANIMALS.