

Anti-phospho-EPHB2 (Tyr473)

Rabbit Polyclonal Antibody

Catalog # E22-65BR

Lot # J1274-15

Cited Applications

WB

Suggested Dilutions:
WB 1:1,000

Ideal working dilutions for each application should be empirically determined by the investigator.

Specificity

Recognizes the EPHB2 protein phosphorylated at tyrosine 473

Cross Reactivity

Human, Mouse, Bovine, Chicken, Xenopus and Zebrafish

Host/Isotype/Clone#

Rabbit, IgG

Immunogen

Synthetic phospho-peptide corresponding to amino acid residues surrounding Tyr473 conjugated to KLH

Formulation

100 µl in 10 mM HEPES (pH 7.5), 150 mM NaCl, 100 µg per ml BSA and 50% glycerol.

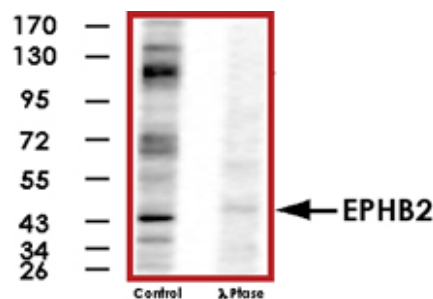
Scientific Background

EPHB2 is a member of the Eph family of receptor tyrosine kinases that mediate neuro-developmental processes such as boundary formation, axon guidance, vasculogenesis and cell migration. Activated EPHB2 regulates the activity of the non-receptor tyrosine kinase Abl (1). EPHB2 is overexpressed in a number of tumors, particularly glioblastoma. In fact, EPHB2 overexpression leads to increased glioma cell migration and invasion (2).

References

1. Yu, H H. et al: Multiple signaling interaction of Abl and Arg kinases with the EphB2 receptor. *Oncogene*. 2001 Jul 5;20(30):3995-4006.
2. Nakada, M. et al: The phosphorylation of EphB2 receptor regulates migration and invasion of human glioma cells. *Cancer Res*. 2004 May 1;64(9):3179-85.
3. Kalo, M S. et al: In vivo tyrosine phosphorylation sites of activate ephrin-B1 and ephB2 from neural tissue. *J Biol Chem*. 2001 Oct 19;276(42):38940-8.

Sample Data



Western blot of rat testes lysate showing specific immunolabeling of the ~46kDa EPHB2 phosphorylated at Tyr473 (Control). The phosphospecificity of this labeling is shown in the second lane (lambda-phosphatase: λ-Ptase). The blot is identical to the control except that it was incubated in λ-Ptase (1200 units for 30 min) before being exposed to the Anti-phospho-EPHB2 (Tyr473). The immunolabeling of the EPHB2 is completely eliminated by treatment with λ-Ptase.

Anti-phospho-EPHB2 (Tyr473)

Rabbit Polyclonal Antibody

Catalog Number

E22-65BR

Specific Lot Number

J1274-15

Purification

Affinity chromatography

Stability

1yr at -20°C from date of shipment

Storage & Shipping

Store product at -20°C. For optimal storage, aliquot antibody into smaller quantities after centrifugation and store at recommended temperature. For optimal performance, avoid repeated handling and multiple freeze/thaw cycles. Product shipped on ice packs.

To place your order, please contact us by phone 1-(604)-232-4600, fax 1-604-232-4601 or by email: orders@signalchem.com
www.signalchem.com

FOR IN VITRO RESEARCH PURPOSES ONLY. NOT INTENDED FOR USE IN HUMAN OR ANIMALS.