

Anti-phospho-ELK1 (Ser383)

Rabbit Polyclonal Antibody

Catalog # E64-65R

Lot # J1274-13

Cited Applications

WB

Suggested Dilutions:
WB 1:1,000

Ideal working dilutions for each application should be empirically determined by the investigator.

Specificity

Recognizes the ELK1 protein phosphorylated at serine 383

Cross Reactivity

Human, Mouse, Rat, Canine, non-Human Primate and Zebrafish

Host/Isotype/Clone#

Rabbit, IgG

Immunogen

Synthetic phospho-peptide corresponding to amino acid residues surrounding Ser383 conjugated to KLH

Formulation

100 µl in 10 mM HEPES (pH 7.5), 150 mM NaCl, 100 µg per ml BSA and 50% glycerol.

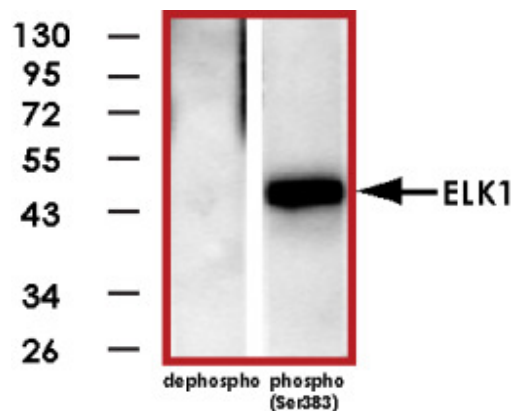
Scientific Background

ELK1 is a member of the ETS oncogene family of transcription factors (1). ELK1 interacts with the promoter of the c-fos proto-oncogene and has been shown to be involved in the Ras-Raf-MAPK signaling cascade (1). MAP kinase phosphorylates ELK1 at Ser383 to control the transcriptional activity of ELK1 (2). Reduced phosphorylation of ELK1 is implicated in premature aging syndrome and insulin resistance (3).

References

1. Chen, A G. et al: Overexpression of Ets-like protein 1 in human esophageal squamous cell carcinoma. World J Gastroenterol. 2006. 28;12(48):7859-63.
2. Li, Q J. et al: MAP kinase phosphorylation dependent activation of Elk-1 leads to activation of the co-activator p300. EMBO J 2003 22:281-291.
3. Knebel, B B. et al: Reduced phosphorylation of transcription factor Elk-1 in cultured fibroblasts of a patient with premature aging syndrome and insulin resistance. ExpClinEndocrinol Diabetes. 2005;113(2):94-101.

Sample Data



Western blot of recombinant ELK1 showing specific immunolabeling of the ~46kDa ELK1 phosphorylated at Ser383. The immunolabeling is absent in dephospho-ELK1.

Anti-phospho-ELK1 (Ser383)

Rabbit Polyclonal Antibody

Catalog Number

E64-65R

Specific Lot Number

J1274-13

Purification

Affinity chromatography

Stability

1yr at -20°C from date of shipment

Storage & Shipping

Store product at -20°C. For optimal quantities after centrifugation and store at recommended temperature. For optimal performance, avoid repeated handling and multiple freeze/thaw cycles. Product shipped on ice packs.

To place your order, please contact us by phone 1-(604)-232-4600, fax 1-604-232-4601 or by email: orders@signalchem.com
www.signalchem.com

FOR IN VITRO RESEARCH PURPOSES ONLY. NOT INTENDED FOR USE IN HUMAN OR ANIMALS.