

## Anti-phospho-HER2 (Tyr877)

Rabbit Polyclonal Antibody

**Catalog # E27-65R**

Lot # J1178-9

### Cited Applications

WB, IHC

*Suggested Dilutions:*

WB: 1:500-1:1000 IHC: 1:50-1:100

*Ideal working dilutions for each application should be empirically determined by the investigator.*

### Specificity

Recognizes the HER2 protein phosphorylated at tyrosine 877

### Cross Reactivity

Human, Mouse and Rat

### Host/Isotype/Clone#

Rabbit, IgG

### Immunogen

Synthetic phospho-peptide corresponding to amino acid residues surrounding Tyr877

### Formulation

PBS (pH 7.4) 150mM NaCl, 0.02% sodium azide and 50% glycerol.

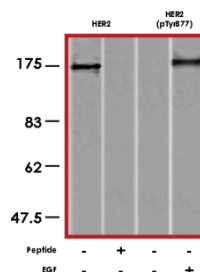
### Scientific Background

HER2 is a glycoprotein tyrosine kinase receptor that has extensive homology to the epidermal growth factor receptor. Overexpression of HER2 in NIH 3T3 cells results in cellular transformation and tumorigenesis (1). HER2 is amplified in about 30% of primary human breast malignancies and is associated with the most aggressive tumors. These tumors characteristically display uncontrolled proliferation, resistance to apoptosis and increased motility (2). HER2 activity is regulated in part by phosphorylation at Tyr877.

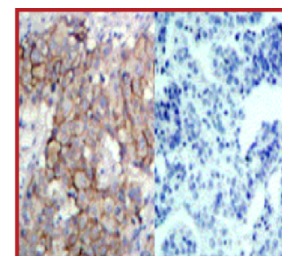
### References

- Hudziak, R M. et al: Increased expression of the putative growth factor receptor p185HER2 causes transformation and tumorigenesis of NIH 3T3 cells. Proc Natl Acad Sci U S A. 1987 Oct;84(20):7159-63.
- Badache, A. et al: The ErbB2 Signaling Network as a Target for Breast Cancer Therapy. J Mammary Gland Biol Neoplasia. 2006 Jan;11(1):13-25.

### Sample Data



Western blot analysis of extracts from MDA-MB-231 cells untreated or treated with EGF (200ng/ml, 5min), using HER2 antibody (lanes 1 and 2) and anti-phospho-HER2 (Tyr877) antibody (lanes 3 and 4).



P-Peptide - +

Immunohistochemical analysis of paraffin-embedded human breast carcinoma tissue using anti-phospho-HER2 (Tyr877) antibody.

## Anti-phospho-HER2 (Tyr877)

Rabbit Polyclonal Antibody

Catalog Number

E27-65R

Specific Lot Number

J1178-9

Purification Affinity chromatography

Stability 1yr at -20°C from date of shipment

Storage & Shipping Store product at -20°C. For optimal storage, aliquot antibody into smaller quantities after centrifugation and store at recommended temperature. For optimal performance, avoid repeated handling and multiple freeze/thaw cycles. Product shipped on ice packs.

To place your order, please contact us by phone 1-(604)-232-4600, fax 1-604-232-4601 or by email: [orders@signalchem.com](mailto:orders@signalchem.com)  
[www.signalchem.com](http://www.signalchem.com)

**FOR IN VITRO RESEARCH PURPOSES ONLY. NOT INTENDED FOR USE IN HUMAN OR ANIMALS.**