

## Anti-phospho-STAT3 (Tyr705)

Rabbit Polyclonal Antibody

Catalog # **S54-365R**

Lot # J1178-33

### Cited Applications

WB, IHC

Suggested Dilutions:

WB: 1:500-1:1000 IHC: 1:50-1:100

Ideal working dilutions for each application should be empirically determined by the investigator.

### Specificity

Recognizes the STAT3 protein phosphorylated at tyrosine 705

### Cross Reactivity

Human, Mouse and Rat

### Host/Isotype/Clone#

Rabbit, IgG

### Immunogen

Synthetic phospho-peptide corresponding to amino acid residues surrounding Tyr705

### Formulation

PBS (pH 7.4) 150mM NaCl, 0.02% sodium azide and 50% glycerol.

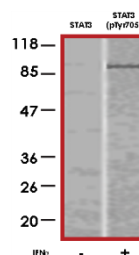
### Scientific Background

STAT3 is a member of the signal transducers and activators of transcription (STAT) family of proteins that carry out dual functions. STAT3 is a DNA binding protein that is widely expressed and becomes activated upon phosphorylation on Tyr708, which leads to dimerization, intracellular translocation and DNA-binding. Phosphorylation at Ser727 regulates transcriptional activity. STAT3 is activated in response to a variety of stimuli, which includes EGF, IL-6, PDGF, IL-2 and G-CSF (1). STAT3 forms homo- and heterodimers with other STAT proteins to modulate the transcription of various genes (2).

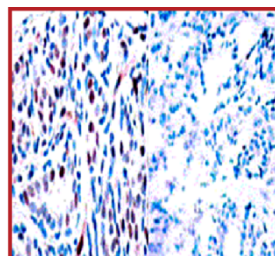
### References

1. Zhong, Z. et al: Stat3: a STAT family member activated by tyrosine phosphorylation in response to epidermal growth factor and interleukin-6. *Science*. 1994 Apr 1;264(5155):95-8.
2. Tian, S. S. et al: Rapid activation of the STAT3 transcription factor by granulocyte colony-stimulating factor. *Blood*. 1994 Sep 15;84(6):1760.

### Sample Data



Western blots from HeLa cells using anti-phospho-STAT3 (Tyr705) antibody.



P-Peptide - +

Immunohistochemical analysis of paraffin-embedded human breast carcinoma tissue using anti-phospho-STAT3 (Tyr705) antibody.

## Anti-phospho-STAT3 (Tyr705)

Rabbit Polyclonal Antibody

Catalog Number

S54-365R

Specific Lot Number

J1178-33

Purification Affinity chromatography

Stability 1 yr at -20°C from date of shipment

Storage & Shipping

Store product at -20°C. For optimal storage, aliquot antibody into smaller quantities after centrifugation and store at recommended temperature. For optimal performance, avoid repeated handling and multiple freeze/thaw cycles. Product shipped on ice packs.

To place your order, please contact us by phone 1-(604)-232-4600, fax 1-604-232-4601 or by email: [orders@signalchem.com](mailto:orders@signalchem.com)  
[www.signalchem.com](http://www.signalchem.com)

**FOR IN VITRO RESEARCH PURPOSES ONLY. NOT INTENDED FOR USE IN HUMAN OR ANIMALS.**